

Product datasheet for **TA397458S**

Ngp Rabbit Polyclonal Antibody

Product data:

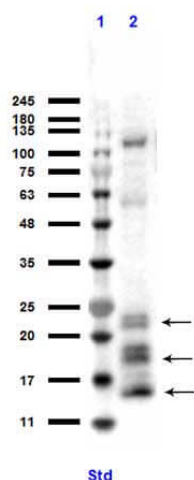
Product Type:	Primary Antibodies
Applications:	IF, WB
Recommended Dilution:	WB: 1:1000 IF: 1:200
Reactivity:	Mouse
Host:	Rabbit
Clonality:	Polyclonal
Immunogen:	Affinity purified Anti-Ngp antibody was prepared from whole rabbit serum produced by repeated immunizations with a recombinant protein of mouse Ngp protein.
Specificity:	Anti-Ngp is directed against full-length mouse Ngp. This product is an affinity purified antibody produced by immunoaffinity chromatography using recombinant protein coupled to agarose beads. A BLAST analysis was used to suggest reactivity with this protein in Ngp based on 100% homology match for the immunogen sequence.
Formulation:	0.02 M Potassium Phosphate, 0.15 M Sodium Chloride, pH 7.2
Concentration:	1.10 mg/ml - lot specific
Conjugation:	Unconjugated
Storage:	Store vial at -20° C or below prior to opening. This vial contains a relatively low volume of reagent (25 µL). To minimize loss of volume dilute 1:10 by adding 225 µL of the buffer stated above directly to the vial. Recap, mix thoroughly and briefly centrifuge to collect the volume at the bottom of the vial. Use this intermediate dilution when calculating final dilutions as recommended below. Store the vial at -20°C or below after dilution. Avoid cycles of freezing and thawing.
Stability:	Expiration date is one (1) year from date of receipt.
Gene Name:	neutrophilic granule protein
Database Link:	Entrez Gene 18054 Mouse O08692



[View online »](#)

- Background:** This antibody is designed, produced, and validated as part of a collaboration between Rockland and the National Cancer Institute (NCI). A proteomic study in 2011 determined a direct correlation between NGP mRNA levels and myeloid-derived suppressor cells. Specifically cathepsin B, a catalytic mechanism and potentially biomarker in a variety of cancers and amyloid plaque development, was inhibited by NGP. The significance of NGP as a negative regulator of tumor metastasis makes this antibody ideal for investigators involved in cancer research, as well as Alzheimer's research.
- Synonyms:** rabbit anti-Ngp antibody, Neutrophilic granule protein, Cystatin-like protein, Myeloid bactenecin protein, Myeloid secondary granule protein
- Note:** This affinity purified antibody has been tested for use in IF and western blot. Specific conditions for reactivity should be optimized by the end user. Expect a band 39-42 kDa for non reduced and 20-27 kDa for reduced gels corresponding to Ngp by western blotting in the appropriate cell lysate or extract.

Product images:



Western Blot of Rabbit anti-Ngp antibody. Lane 1: MW ladder opal pre-stained (p/n MB-210-0500). Lane 2: 32D lysate. Load: 10 μ g per lane. Primary antibody: Ngp antibody at 1:1000 for overnight at 4°C. Secondary antibody: rabbit secondary HRP antibody (p/n 611-103-122) at 1:70,000 for 45 min at RT. Block: BlockOut (p/n MB-073) overnight at 4°C. Predicted/Observed size: 17, 20 kDa for Ngp. Higher banding due to glycosylation. ~125 kDa non-specific.