

Product datasheet for **TA397457**

TAF10 Rabbit Polyclonal Antibody

Product data:

Product Type:	Primary Antibodies
Applications:	ELISA, WB
Recommended Dilution:	WB: 1.0 ug/ml ELISA: User Optimized
Reactivity:	Human
Host:	Rabbit
Clonality:	Polyclonal
Immunogen:	TAF10 antibody was prepared from whole rabbit serum produced by repeated immunizations with a synthetic peptide corresponding to C-Terminal portion of human TAF10.
Specificity:	This affinity-purified antibody is directed against human TAF10 protein. The product was affinity purified from monospecific antiserum by immunoaffinity purification. A BLAST analysis was used to suggest cross reactivity with TAF10 protein from human and mouse (100% homology). Reactivity against homologues from other sources is not known.
Formulation:	0.02 M Potassium Phosphate, 0.15 M Sodium Chloride, pH 7.2
Concentration:	1.08 mg/ml - lot specific
Conjugation:	Unconjugated
Storage:	Store vial at -20° C prior to opening. Aliquot contents and freeze at -20° C or below for extended storage. Avoid cycles of freezing and thawing. Centrifuge product if not completely clear after standing at room temperature. This product is stable for several weeks at 4° C as an undiluted liquid. Dilute only prior to immediate use.
Stability:	Expiration date is one (1) year from date of receipt.
Gene Name:	TATA-box binding protein associated factor 10
Database Link:	Entrez Gene 6881 Human Q12962



[View online »](#)

Background:

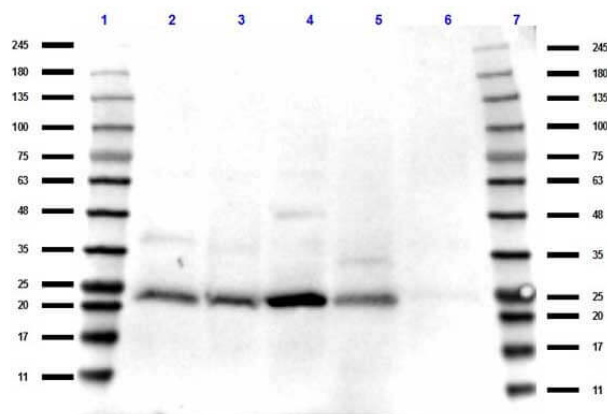
TAF10 (TATA-Box Binding Protein Associated Factor 10) is the protein that coordinates activities for the initiation of transcription by RNA polymerase II required for activities of more than 70 polypeptides. TFIID binds to the core promoter to position the polymerase properly, serves as the scaffold for assembly of the remainder of the transcription complex, and acts as a channel for regulatory signals. TFIID is composed of the TATA-binding protein (TBP) and a group of evolutionarily conserved proteins known as TBP-associated factors or TAFs. TAFs may participate in basal transcription, serve as co-activators, function in promoter recognition or modify general transcription factors (GTFs) to facilitate complex assembly and transcription initiation. This gene encodes one of the small subunits of TFIID that is associated with a subset of TFIID complexes. Studies with human and mammalian cells have shown that this subunit is required for transcriptional activation by the estrogen receptor, for progression through the cell cycle, and may also be required for certain cellular differentiation programs. Anti-TAF10 Antibody is useful for researchers interested in Chromatin research, transcription factor activity research, and DNA binding and transcription co-activator activity research.

Synonyms:

rabbit anti-TAF10 antibody, rabbit anti-Transcription initiation factor TFIID subunit 10 antibody, TAF-10, TAF 10, TAF2A, TAF2H, TAFII30, STAF28, Transcription initiation factor TFIID 30 kDa subunit, TAF(II)30, TAFII-30

Note:

Anti-TAF10 Antibody has been tested for use in ELISA, Dot Blot, and western blot. Specific conditions for reactivity should be optimized by the end user. Expect a band approximately 21.7 kDa in size corresponding to TAF10 protein by western blotting in the appropriate cell lysate or extract.

Product images:

Western Blot of Rabbit Anti-TAF10 antibody. Lane 1: Opal Pre-stained Ladder (p/n MB-210-0500). Lane 2: Hela WCL (p/n W09-000-364). Lane 3: HeLa nuclear extract (p/n W09-001-367). Lane 4: HEK293 WCL (p/n W09-000-365). Lane 5: PANC-1 WCL (p/n W09-001-GM2). Lane 6: Mouse brain WCL (p/n W10-001-T004). Lane 7: Opal Pre-stained Ladder (p/n MB-210-0500). Load: 35 µg per lane. Primary antibody: TAF10 antibody at 1:1000 for overnight at 4°C. Secondary antibody: rabbit secondary HRP antibody (p/n 611-103-122) at 1:70,000 for 45 min at RT. Block: (p/n MB-070) overnight at 4°C. Predicted/Observed size: 21 kda for TAF10.