

Product datasheet for **TA397450**

Abi1 Rabbit Polyclonal Antibody

Product data:

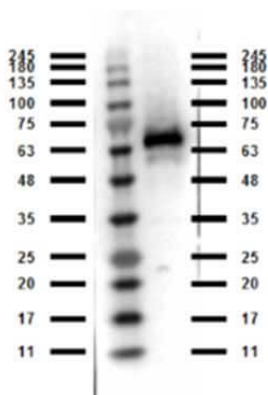
Product Type:	Primary Antibodies
Applications:	ELISA, WB
Recommended Dilution:	WB: 1.0 ug/ml ELISA: 5.0 µg/ml
Reactivity:	Human, Mouse, Rat
Host:	Rabbit
Clonality:	Polyclonal
Immunogen:	This affinity purified antibody was prepared from whole rabbit serum produced by repeated immunizations with a synthetic peptide corresponding to near c-terminal of the mouse Abi-1 protein.
Specificity:	Anti-Abi1 is directed against mouse Abi1. This product is an affinity purified antibody produced by immunoaffinity chromatography using peptide coupled to agarose beads. A BLAST analysis was used to suggest cross reactivity with this protein in human and rat based on 100% homology for the immunogen sequence. Reactivity against homologues from other sources is not known.
Formulation:	0.02 M Potassium Phosphate, 0.15 M Sodium Chloride, pH 7.2
Concentration:	1.07 mg/ml - lot specific
Conjugation:	Unconjugated
Storage:	Store vial at -20° C or below prior to opening. This vial contains a relatively low volume of reagent (25 µL). To minimize loss of volume dilute 1:10 by adding 225 µL of the buffer stated above directly to the vial. Recap, mix thoroughly and briefly centrifuge to collect the volume at the bottom of the vial. Use this intermediate dilution when calculating final dilutions as recommended below. Store the vial at -20°C or below after dilution. Avoid cycles of freezing and thawing.
Stability:	Expiration date is one (1) year from date of receipt.
Gene Name:	abl-interactor 1
Database Link:	Entrez Gene 11308 Mouse Q8CBW3



[View online »](#)

- Background:** Anti-Abi1 Antibody was designed, produced, and validated as part of the Joy Cappel Young Investigator Award (JCYIA). Abi1 gene has been suggested to have a role in inhibiting cell growth and encodes an adaptor protein in the Abelson-interactor family. The protein is involved in signal transduction, actin regulation and cytoskeletal remodeling. Studies suggest that Abi1 is a member of the WAVE complex and a dysfunctional complex may allow for the progression of prostate cancer. Anti-Abi1 is ideal for researchers interested in melanoma, colon and breast cancer and other cancer antibody research.
- Synonyms:** rabbit anti-Abi1 Antibody, Abi-1, Abi 1, Abl Interactor 1, Eps8 SH3 Domain-Binding Protein, Abl-Binding Protein, Abelson Interactor 1, E3B1, Spectrin SH3 Domain Binding Protein 1, Nap1-binding protein, SSH3BP1
- Note:** This affinity purified antibody has been tested for use in ELISA and western blot. Specific conditions for reactivity should be optimized by the end user. Expect a band ~ 65 kDa in size corresponding to Abi1 by western blotting in the appropriate cell lysate or extract.

Product images:



Western Blot of Rabbit anti-Abi1 antibody.
Marker: Opal Pre-stained ladder (p/n MB-210-0500). Lane 1: Abi1 recombinant protein. Load: 50 ng per lane. Primary antibody: Abi1 antibody at 1:1,000 for o/n at 4°C. Secondary antibody: Peroxidase rabbit secondary antibody (p/n 611-103-122) at 1:70,000 for 30 min at RT. Blocking Buffer: (p/n MB-070) for 30 min at RT. Predicted/Observed size: 65 kDa for Abi1.