

## Product datasheet for **TA397449S**

### Pol Rabbit Polyclonal Antibody

#### Product data:

Product Type:	Primary Antibodies
Applications:	ELISA, WB
Recommended Dilution:	<b>WB:</b> 1.0 ug/mL <b>ELISA:</b> 1:50,000-1:150,000
Reactivity:	Mouse
Host:	Rabbit
Clonality:	Polyclonal
Immunogen:	Affinity purified Anti-ORF2 antibody was prepared from whole rabbit serum produced by repeated immunizations with a synthetic peptide near the c-terminus of mouse ORF2 protein.
Specificity:	Anti-Orf2 is directed against mouse ORF2 near a c-terminus position. This product is an affinity purified antibody produced by immunoaffinity chromatography using peptide coupled to agarose beads. A BLAST analysis was used to suggest reactivity with this protein from human and feline based on 100% homology for the immunogen sequence.
Formulation:	0.02 M Potassium Phosphate, 0.15 M Sodium Chloride, pH 7.2
Concentration:	1.07 mg/mL - lot specific
Conjugation:	Unconjugated
Storage:	Store vial at -20° C or below prior to opening. This vial contains a relatively low volume of reagent (25 µL). To minimize loss of volume dilute 1:10 by adding 225 µL of the buffer stated above directly to the vial. Recap, mix thoroughly and briefly centrifuge to collect the volume at the bottom of the vial. Use this intermediate dilution when calculating final dilutions as recommended below. Store the vial at -20°C or below after dilution. Avoid cycles of freezing and thawing.
Stability:	Expiration date is one (1) year from date of receipt.
Database Link:	<a href="#">2731767</a>



[View online »](#)

**Background:**

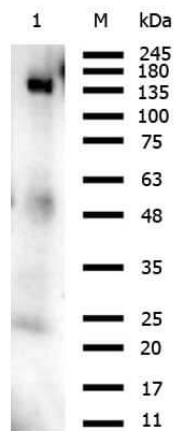
Anti-Orf2 Antibody was designed, produced, and validated as part of the Joy Cappel Young Investigator Award (JCYIA). The multi-functional nuclear protein ORF2p is involved in reverse transcriptase and endonuclease processes. ORF2 elements are epigenetically silenced throughout embryonic development and it is suggested that mutations of L1 would result in detrimental de novo insertions into the genome, negatively affecting gene expression. L1 elements are critical components in the mammalian genome, and much is still not known regarding these proteins. Studies implicate that line-1 is activated in fetal oocytes and L1ORF2p may contribute to the eradication or selection of the oocytes.

**Synonyms:**

Rabbit Anti-Orf2 Antibody, LINE-1 retrotransposable element ORF2 protein, Endonuclease reverse transcriptase, Line1 protein, Orf2p, Retrovirus-related Pol polyprotein LINE-1, Long interspersed element-1

**Note:**

This affinity purified antibody has been tested for use in ELISA and Western Blot. Specific conditions for reactivity should be optimized by the end user. Expect a band ~150 kDa in size corresponding to Orf2 by western blotting in the liver cell lysates or extract.

**Product images:**


Western Blot of Rabbit Anti-Orf2 antibody. Lane 1: Mouse liver whole cell lysate (W10-000-T020). Load: 10 µg per lane. Primary antibody: Orf2 antibody at 1.0 µg/mL for overnight at 4°C. Secondary antibody: Gt-a-Rb HRP (p/n 611-103-122) at 1:40,000 for 30 min at RT. Block: MB-070 overnight at 4°C. Predicted/Observed size: 150 kDa for Orf2.