

## Product datasheet for **TA397447S**

### Pax7 Rabbit Polyclonal Antibody

#### Product data:

Product Type:	Primary Antibodies
Applications:	ELISA, WB
Recommended Dilution:	<b>WB:</b> 1.0 ug/ml <b>ELISA:</b> 1:10,000 - 1:40:000
Reactivity:	Human, Mouse
Host:	Rabbit
Clonality:	Polyclonal
Immunogen:	Pax7 affinity purified antibody was prepared from whole rabbit serum produced by repeated immunizations with a synthetic peptide corresponding to an internal region of Pax7 protein.
Specificity:	Anti-Pax-7 was affinity purified from monospecific antiserum by immunoaffinity chromatography. A BLAST analysis was used to suggest cross reactivity with Pax7 protein from mouse (100% homology) and human (66.7% homology) for the immunizing sequence. Cross-reactivity with Pax7 from other sources has not been determined.
Formulation:	0.02 M Potassium Phosphate, 0.15 M Sodium Chloride, pH 7.2
Concentration:	1.0 mg/ml - lot specific
Conjugation:	Unconjugated
Storage:	Store vial at -20° C or below prior to opening. This vial contains a relatively low volume of reagent (25 µL). To minimize loss of volume dilute 1:10 by adding 225 µL of the buffer stated above directly to the vial. Recap, mix thoroughly and briefly centrifuge to collect the volume at the bottom of the vial. Use this intermediate dilution when calculating final dilutions as recommended below. Store the vial at -20°C or below after dilution. Avoid cycles of freezing and thawing.
Stability:	Expiration date is one (1) year from date of receipt.
Gene Name:	paired box 7
Database Link:	<a href="#">Entrez Gene 18509 Mouse P47239</a>



[View online »](#)

**Background:**

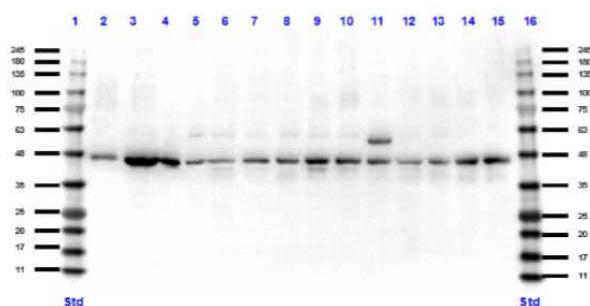
The Anti-Pax7 antibody was designed, produced, and validated as part of the Joy Cappel Young Investigator Award (JCYIA). Paired box protein Pax-7 transcription factor plays a role in myogenesis through regulation of muscle precursor cells proliferation. These genes play critical roles during fetal development and cancer growth. It is expressed specifically during the development of the nervous and muscular system. Anti-Pax7 antibody is ideal for researchers interested in developmental biology, stem cell research, cell growth and cancer research.

**Synonyms:**

rabbit anti-Pax7 antibody, Paired box protein Pax-7, Pax 7, Pax-7

**Note:**

Anti-Pax7 antibody has been tested in ELISA and Western Blot. Specific conditions for reactivity should be optimized by the end user. Expect a band approximately 54.9 kDa in size corresponding to Pax7 by western blotting in the appropriate cell lysate or extract.

**Product images:**


Western Blot of Rabbit anti-Pax7 antibody. Lane 1: Opal Pre-stained ladder (p/n MB-210-0500). Lane 2: Mouse muscle protein lysate. Lane 3: C2C12 Lysate (p/n W09-001-GL7). Lane 4: Ms spleen lysate (p/n W10-000-T029). Lane 5: Ms brain lysate (p/n W10-000-T004). Lane 6: HEK293T Lysate (W09-001-GX5). Lane 7: HeLa WCL (p/n W09-000-364). Lane 8: MCF7 Lysate (p/n W09-000-360). Lane 9: Jurkat Lysate (p/n W09-001-370). Lane 10: A431 Lysate (p/n W09-000-361). Lane 11: A549 Lysate (p/n W09-001-372). Lane 12: LNCap Lysate (p/n W09-001-GJ9). Lane 13: MOLT-4 Lysate (p/n W09-001-GK2). Lane 14: Ramos Lysate (p/n W09-001-369). Lane 15: Raji Lysate (W09-001-368). Lane 16: Opal Pre-stained ladder (p/n MB-210-0500). Load: 10 µg per lane. Primary antibody: Pax7 antibody at 1:1,000 for overnight at RT. Secondary antibody: Peroxidase rabbit secondary antibody (p/n 611-103-122) at 1:70,000 for 30 min at RT. Blocking Buffer: MB-070 for 30 min at RT. Predicted/Observed size: ~55 kDa for Pax7.