

## Product datasheet for **TA397441S**

### STAT5A Rabbit Polyclonal Antibody

#### Product data:

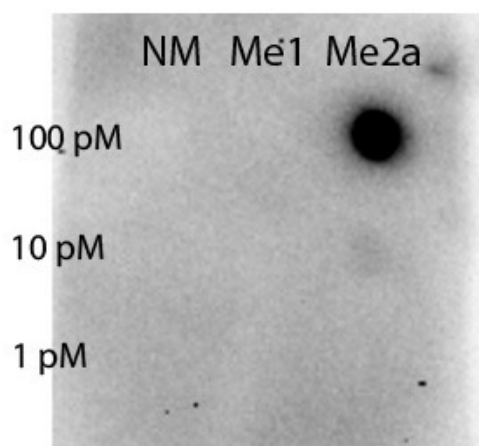
Product Type:	Primary Antibodies
Applications:	ELISA, WB
Recommended Dilution:	<b>WB:</b> 1:500 <b>ELISA:</b> 1:5000
Reactivity:	Human
Host:	Rabbit
Clonality:	Polyclonal
Immunogen:	STAT5A [Asym-dimethyl Arg31] affinity purified antibody was prepared from whole rabbit serum produced by repeated immunizations with a synthetic monomethylated peptide surrounding Arginine 31 of human STAT.
Specificity:	Anti-STAT5 R31/Me2a was affinity purified from monospecific antiserum by immunoaffinity chromatography. This antibody is specific for STAT5 R31/Me2a reacts with human STAT5. A BLAST analysis was used to suggest cross-reactivity with Human, mouse, and rat. Cross-reactivity with STAT5 from other sources has not been determined.
Formulation:	0.02 M Potassium Phosphate, 0.15 M Sodium Chloride, pH 7.2
Concentration:	1.05 mg/ml - lot specific
Conjugation:	Unconjugated
Storage:	Store vial at -20° C or below prior to opening. This vial contains a relatively low volume of reagent (25 µL). To minimize loss of volume dilute 1:10 by adding 225 µL of the buffer stated above directly to the vial. Recap, mix thoroughly and briefly centrifuge to collect the volume at the bottom of the vial. Use this intermediate dilution when calculating final dilutions as recommended below. Store the vial at -20°C or below after dilution. Avoid cycles of freezing and thawing.
Stability:	Expiration date is one (1) year from date of receipt.
Database Link:	<a href="#">P42229</a>



[View online »](#)

- Background:** Signal transducer and activator of transcription 5 (Stat5) belongs to a family of cytoplasmic transcription factors that can be activated (phosphorylated) by a cell surface receptor. Phosphorylation at Tyr694 is obligatory for Stat5 activation. Stat5 has two isoforms, Stat5a and Stat5b. Aberrant Stat5 activation has been implicated in the pathogenesis of chronic myelogenous leukemia, prostate and breast cancer and tumor metastasis. Stat5 is localized in the cytoplasm and upon phosphorylation at Y694 is translocated to the nucleus.
- Synonyms:** rabbit anti-STAT5 Asym-dimethyl Arg31 antibody, rabbit anti-STAT5 R31me2a antibody, STAT-5, STAT 5, STAT5A, Signal Transducer and Activator of Transcription 5A antibody, STAT-5A, Transcription factor STAT5A antibody
- Note:** Anti-STAT5 [Asym-dimethyl Arg31] antibody has been tested by Dot Blot and is useful for Western Blot. Specific conditions for reactivity should be optimized by the end user. Expect a band approximately ~90.6 kDa corresponding to STAT5 protein by Western Blotting in the appropriate cell lysate or extract.

### Product images:



Dot blot of Rabbit Anti-STAT5 R31-Me2a antibody. Antigen: non-modified, monomethylated and asymmetric dimethylated forms of the immunizing peptide. Load: 100, 10, or 1 picomolar as indicated. Primary antibody: STAT5 R31-Me2a antibody at 1:1000 for 90 min at RT. (Date: 11/04/14; Exposure time: 82 seconds)