

Product datasheet for **TA397439S**

Kcnab2 Rabbit Polyclonal Antibody

Product data:

Product Type:	Primary Antibodies
Applications:	ELISA, IHC, WB
Recommended Dilution:	WB: 1:500 IHC: 5 - 10 ug/mL ELISA: 1:25000
Reactivity:	Human
Host:	Rabbit
Clonality:	Polyclonal
Immunogen:	beta catenin antibody was prepared from whole rabbit serum produced by repeated immunizations with a synthetic peptide corresponding to catenin beta-1 C-terminus.
Specificity:	beta catenin antibody is directed against catenin beta-1 protein. The product was affinity purified from monospecific antiserum by immunoaffinity chromatography. A BLAST analysis was used to suggest cross-reactivity with catenin beta-1 protein from human, mouse, rat, bovine, Xenopus laevis, and Danio rerio at 100% based on homology with the immunizing sequence. Reactivity against homologues from other sources is not known.
Formulation:	0.02 M Potassium Phosphate, 0.15 M Sodium Chloride, pH 7.2
Concentration:	1.15 mg/mL - lot specific
Conjugation:	Unconjugated
Storage:	Store vial at -20° C or below prior to opening. This vial contains a relatively low volume of reagent (25 µL). To minimize loss of volume dilute 1:10 by adding 225 µL of the buffer stated above directly to the vial. Recap, mix thoroughly and briefly centrifuge to collect the volume at the bottom of the vial. Use this intermediate dilution when calculating final dilutions as recommended below. Store the vial at -20°C or below after dilution. Avoid cycles of freezing and thawing.
Stability:	Expiration date is one (1) year from date of receipt.
Gene Name:	potassium voltage-gated channel, shaker-related subfamily, beta member 2
Database Link:	<u>F1QGH7</u>



[View online »](#)

Background:

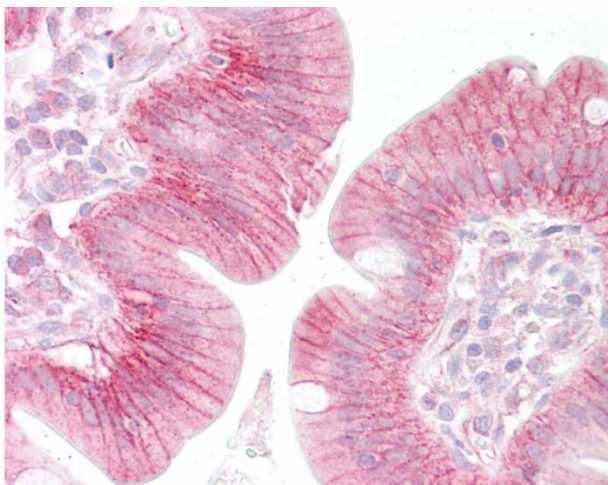
Beta-catenin 1 (or β -catenin 1) is a protein that is encoded by the CTNNB1 gene. β -catenin 1 is a subunit of the cadherin protein complex and has been implicated as an integral component in the Wnt signaling pathway. This pathway plays a key role in the regulation of cellular processes involved in development, differentiation, and adult tissue homeostasis. In the presence of Wnt ligand, β -catenin 1 is not ubiquitinated and accumulates in the nucleus, where it associates with T-cell factor (TCF) family members to regulate target gene expression in many developmental and adult tissues. Recruitment of β -catenin 1 to Wnt response element (WRE) chromatin converts TCFs from transcriptional repressors to activators. β -catenin 1 is also involved in the regulation of cell adhesion. It acts as a negative regulator of centrosome cohesion. Aberrant Wnt/ β -catenin signaling is widely implicated in cancer, bone disorders, kidney and intestinal cell disorders and other disease states. β -catenin 1 is located in the cytoplasm when it is unstabilized or bound to CDH1. Interaction with GLIS2 and MUC1 promotes nuclear translocation. Interaction with EMD inhibits nuclear localization. The majority of β -catenin 1 is localized to the cell membrane. In interphase, colocalizes with CROCC between CEP250 puncta at the proximal end of centrioles, and this localization is dependent on CROCC and CEP250. In mitosis, when NEK2 activity increases, it localizes to centrosomes at spindle poles independent of CROCC. It further co-localizes with CDK5 in the cell-cell contacts and plasma membrane of undifferentiated and differentiated neuroblastoma cells.

Synonyms:

rabbit anti-beta Catenin Antibody, rabbit anti-Catenin beta antibody, catenin beta-1, β -catenin-1, β -catenin, CTNNB1, CTNNB, beta-catenin antibody

Note:

beta catenin antibody has been tested for use in ELISA, western blotting, immunohistochemistry, and ISH. Specific conditions for reactivity should be optimized by the end user. Expect a band approximately 85.5 kDa in size corresponding to catenin beta-1 protein by western blotting in the appropriate cell lysate or extract.

Product images:


Immunohistochemistry of Rabbit anti-beta Catenin antibody. Tissue: human small intestine epithelium. Fixation: formalin fixed paraffin embedded. Antigen retrieval: not required. Primary antibody: beta Catenin antibody at 5-10 μ g/mL for 1 h at RT. Secondary antibody: Peroxidase goat anti-rabbit at 1:10,000 for 45 min at RT. Localization: Strong membranous staining in a variety of epithelial tissues. Staining: antibody as precipitated red signal with a hematoxylin purple nuclear counterstain.