

Product datasheet for **TA397427S**

Aurora B (AURKB) Rabbit Polyclonal Antibody

Product data:

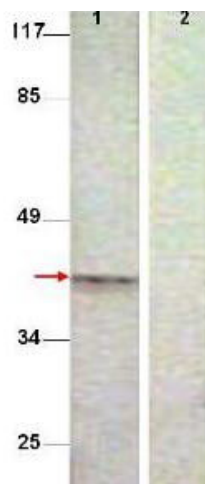
Product Type:	Primary Antibodies
Applications:	ELISA, IF, WB
Recommended Dilution:	WB: 1:250 - 1:2,000 IF: User Optimized ELISA: 1:10,000 - 1:50,000
Reactivity:	Human
Host:	Rabbit
Clonality:	Polyclonal
Immunogen:	This affinity purified antibody was prepared from whole rabbit serum produced by repeated immunizations with a synthetic peptide corresponding to an internal region surrounding T232 of Human Aurora Kinase B protein.
Specificity:	Aurora B Phospho pT232 Antibody is affinity purified antibody is directed against the phosphorylated form of human Aurora Kinase B at the pT232 residue. The product was affinity purified from monospecific antiserum by immunoaffinity purification. Antiserum was first purified against the phosphorylated form of the immunizing peptide. The resultant affinity purified antibody was then cross-adsorbed against the non-phosphorylated form of the immunizing peptide. Reactivity occurs against human Aurora Kinase B pT232 protein and the antibody is specific for the phosphorylated form of the protein. Reactivity with non-phosphorylated human Aurora Kinase B is minimal by ELISA. No reaction is expected against Aurora Kinase A. However, 100% sequence homology as indicated by BLAST analysis is on record for this protein from human, mouse, rat, cow, pig, dog and chimpanzee. Cross reactivity with Aurora Kinase B from other sources is not known.
Formulation:	0.02 M Potassium Phosphate, 0.15 M Sodium Chloride, pH 7.2
Concentration:	1.0 mg/mL - lot specific
Conjugation:	Unconjugated



[View online »](#)

Storage:	Store Phospho Specific Antibody at -20° C or below prior to opening. This vial contains a relatively low volume of reagent (25 µL). To minimize loss of volume dilute 1:10 by adding 225 µL of the buffer stated above directly to the vial. Recap, mix thoroughly and briefly centrifuge to collect the volume at the bottom of the vial. Use this intermediate dilution when calculating final dilutions as recommended below. Store the vial at -20°C or below after dilution. Avoid cycles of freezing and thawing.
Stability:	Expiration date is one (1) year from date of receipt.
Gene Name:	aurora kinase B
Database Link:	Entrez Gene 9212 Human Q96GD4
Background:	Aurora Kinase B (Aurora-B) is a Ser/Thr protein kinase member of the Aurora subfamily that may be directly involved in regulating the cleavage of polar spindle microtubules and is a key regulator for the onset of cytokinesis during mitosis. Aurora Kinase B is localized to the midzone of central spindle in late anaphase and concentrated into the midbody in telophase and cytokinesis and is colocalized with gamma tubulin in the mid-body. High levels of Aurora B expression are seen in the thymus, although it is also expressed in the spleen, lung, testis, colon, placenta and fetal liver. Aurora B is expressed during S and G2/M phase and expression is up-regulated in cancer cells during M phase. Anti-AUROA B pT232 Antibody is useful for researchers interested in gene expression, DNA damage, cytokinesis, and transcription activities.
Synonyms:	rabbit anti-Aurora B pT232 Antibody, AIK2 antibody, AIM1 antibody, ARK2 antibody, AurB antibody, AURKB antibody, Aurora 1 antibody, Aurora and Ipl1 like midbody associated protein 1 antibody, Aurora Kinase B, IPL1-related kinase 2, Aurora-related kinase 2, STK-1, Aurora-B, Ipl1-like midbody-associated protein 1, AIM-1, Aurora/IPL1-related kinase 2
Note:	Anti-Aurora B pT232 Antibody is affinity-purified antibody has been tested for use in ELISA, immunohistochemistry, and by western blot. Expect a band approximately 39 kDa in size corresponding to Aurora Kinase B by western blotting in the appropriate cell lysate or extract. HeLa cell lysate can be used as a positive control.

Product images:



Western Blot shows detection of Aurora B protein at 39 kDa (predicted band size) in lane 1. Lane 1 : Extract from COS7 cells treated with Nocodazole (1ug/ml, 16 hrs). Lane 2 : Extract from COS7 cells treated with Nocodazole (1ug/ml, 16 hrs) incubated with the phosphopeptide immunogen. Primary Antibody : Aurora B (phospho T232) antibody diluted 1:500.