

## Product datasheet for **TA397406S**

### Goat Polyclonal Antibody

#### Product data:

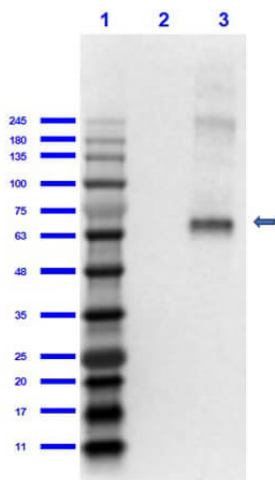
Product Type:	Primary Antibodies
Applications:	ELISA, FC, IHC, WB
Recommended Dilution:	<b>WB:</b> 1:500 -1:3,000 <b>IHC:</b> 1:250 -1:1,500 <b>FC:</b> User Optimized <b>ELISA:</b> 1:5,000 -1:30,000
Host:	Goat
Clonality:	Polyclonal
Immunogen:	Fluorescein conjugated to Goat IgG
Specificity:	Fluorescein Antibody was prepared from monospecific antiserum by immunoaffinity chromatography using Fluorescein conjugated Goat IgG coupled to agarose beads followed by solid phase adsorption(s) to remove any unwanted reactivities. Assay by immunoelectrophoresis resulted in a single precipitin arc against anti-Goat Serum and Fluorescein conjugated Bovine Serum Albumin.
Formulation:	0.02 M Potassium Phosphate, 0.15 M Sodium Chloride, pH 7.2
Concentration:	1.0mg/ml - lot specific
Conjugation:	Unconjugated
Storage:	Store vial at -20° C or below prior to opening. This vial contains a relatively low volume of reagent (25 µL). To minimize loss of volume dilute 1:10 by adding 225 µL of the buffer stated above directly to the vial. Recap, mix thoroughly and briefly centrifuge to collect the volume at the bottom of the vial. Use this intermediate dilution when calculating final dilutions as recommended below. Store the vial at -20°C or below after dilution. Avoid cycles of freezing and thawing.
Stability:	Expiration date is one (1) year from date of receipt.
Background:	Anti-Fluorescein Antibody is designed for immunofluorescence microscopy, fluorescence based plate assays (FLISA) and fluorescent western blotting. Anti-FITC is also suitable as a visualization reagent for fluorescein-labelled compounds (such as antibodies, lectins and peptide nucleic acid (PNA) probes).
Synonyms:	goat Anti-FITC antibody, goat anti-fluorescein antibody



[View online »](#)

**Note:** Anti-Fluorescein Antibody has been tested by ELISA and western blot and is suitable for immunomicroscopy, in situ hybridization and flow cytometry or FACS analysis as well as other antibody based fluorescent assays requiring lot-to-lot consistency.

### Product images:



Western Blot of Goat Anti-Fluorescein Antibody. Lane 1: Opal Prestained Molecular Weight Marker (p/n MB-210-0500). Lane 2: Bovine Albumin (BSA) (p/n 001-0133) [0.05 $\mu$ g]. Lane 3: Bovine Albumin-Fluorescein (BSA-FITC) (p/n 001-0233) [0.05 $\mu$ g]. Primary Antibody: Gt-anti-Fluorescein 1.0 $\mu$ g/mL overnight at 2-8 $^{\circ}$ C. Secondary Antibody: Donkey Anti-Goat HRP (p/n 605-703-002) at 1:40,000 for 30mins at RT. Block: 5% BLOTTO (p/n [B501-0500]) in 1X PBS for 1hr at RT. Predicted MW: ~60kDa. Observed MW: ~65kDa. Exposure: 1sec.