

Product datasheet for **TA397400**

F(ab')₂ Swine IgG (H&L) Antibody Fluorescein Conjugated

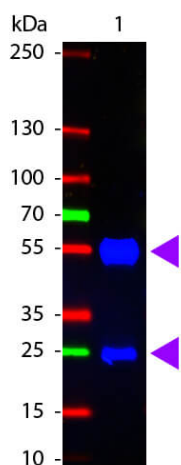
Product data:

Product Type:	Secondary Antibodies
Product Name:	F(ab') ₂ Swine IgG (H&L) Antibody Fluorescein Conjugated
Applications:	FC, IF
Recommended Dilution:	IF: 1:1,000 - 1:5,000 FC: 1:500 - 1:2,500 FLISA: 1:10,000 - 1:50,000
Host:	Rabbit
Immunogen:	Swine IgG whole molecule
Formulation:	0.01 M Sodium Phosphate, 0.15 M Sodium Chloride, pH 7.2
Reconstitution Method:	Restore with deionized water (or equivalent) - Reconstitution Volume: 2.0 mL
Concentration:	10.0 mg/mL - lot specific
Conjugation:	FITC
Storage:	Store vial at 4° C prior to restoration. For extended storage aliquot contents and freeze at -20° C or below. Avoid cycles of freezing and thawing. Centrifuge product if not completely clear after standing at room temperature. This product is stable for several weeks at 4° C as an undiluted liquid. Dilute only prior to immediate use.
Note:	F(ab') ₂ Anti-Swine IgG Antibody Fluorescein Conjugate has been tested by western blot and is suitable for immunomicroscopy and flow cytometry or FACS analysis as well as other antibody based fluorescent assays requiring extremely low background levels, absence of F(c) mediated binding, lot-to-lot consistency, high titer and specificity.



[View online »](#)

Product images:



Western Blot of Fluorescein conjugated Rabbit anti-Swine IgG antibody. Lane 1: Swine IgG. Lane 2: none. Load: 100 ng per lane. Primary antibody: none. Secondary antibody: Fluorescein swine secondary antibody at 1:1,000 for 60 min at RT. Block: MB-070 for 30 min at RT. Predicted/Observed size: 55 kDa, 28 kDa for Swine IgG. Other band(s): none.