

Product datasheet for **TA397309**

Swine IgG (H&L) Antibody Fluorescein Conjugated

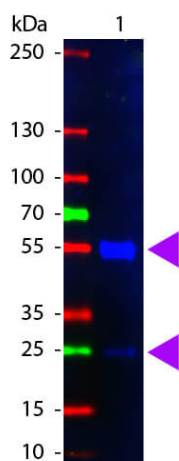
Product data:

Product Type:	Secondary Antibodies
Product Name:	Swine IgG (H&L) Antibody Fluorescein Conjugated
Applications:	FC, IF
Recommended Dilution:	IF: 1:1,000 - 1:5,000 FC: 1:500 - 1:2,500 FLISA: 1:10,000 - 1:50,000
Host:	Rabbit
Immunogen:	Swine IgG whole molecule
Formulation:	0.01 M Sodium Phosphate, 0.15 M Sodium Chloride, pH 7.2
Reconstitution Method:	Restore with deionized water (or equivalent) - Reconstitution Volume: 2.0 mL
Concentration:	10.0 mg/mL - lot specific
Conjugation:	FITC
Storage:	Store vial at 4° C prior to restoration. For extended storage aliquot contents and freeze at -20° C or below. Avoid cycles of freezing and thawing. Centrifuge product if not completely clear after standing at room temperature. This product is stable for several weeks at 4° C as an undiluted liquid. Dilute only prior to immediate use.
Note:	Anti-Swine IgG (H&L) Fluorescein Antibody has been tested by western blot and is designed for immunofluorescence microscopy, fluorescence based plate assays (FLISA) and fluorescent western blotting. This product is also suitable for multiplex analysis, including multicolor imaging, utilizing various commercial platforms.



[View online »](#)

Product images:



Western Blot of Fluorescein Conjugated Rabbit anti-Swine IgG antibody. Lane 1: Swine IgG. Lane 2: none. Load: 100 ng per lane. Primary antibody: none. Secondary antibody: Fluorescein swine secondary antibody at 1:1,000 for 60 min at RT. Block: MB-070 for 30 min at RT. Predicted/Observed size: 55 kDa, 28 kDa for Rabbit IgG. Other band(s): none.