

Product datasheet for **TA397306**

IFNB1 Rabbit Polyclonal Antibody

Product data:

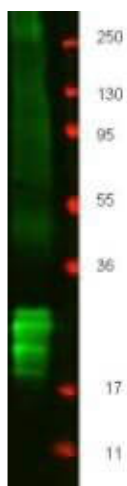
Product Type:	Primary Antibodies
Applications:	ELISA, WB
Recommended Dilution:	WB: 1:500-1:2,000 ELISA: 1:20,000
Reactivity:	Porcine
Host:	Rabbit
Clonality:	Polyclonal
Immunogen:	This protein A purified antibody was prepared from whole rabbit antiserum produced by repeated immunizations with a recombinant protein raised in yeast corresponding to 164 amino acids of the mature swine IFN beta protein.
Specificity:	This product was protein A purified from monospecific antiserum by chromatography. This antibody is specific for swine IFN beta protein. A BLAST analysis was used to suggest cross-reactivity with IFN beta from <i>Sus scrofa</i> (pig), <i>Potamochoerus larvatus koiropotamus</i> , <i>Potamochoerus larvatus</i> (Bushpig), and <i>Phacochoerus africanus</i> (warthog) sources based on 100% homology with the immunizing sequence. Cross-reactivity with IFN beta from other sources has not been determined.
Formulation:	0.02 M Potassium Phosphate, 0.15 M Sodium Chloride, pH 7.2
Reconstitution Method:	Restore with deionized water (or equivalent) - Reconstitution Volume: 100 µL
Concentration:	1.0 mg/mL - lot specific
Conjugation:	Unconjugated
Storage:	Store vial at -20° C or below prior to opening. This vial contains a relatively low volume of reagent (25 µL). To minimize loss of volume dilute 1:10 by adding 225 µL of the buffer stated above directly to the vial. Recap, mix thoroughly and briefly centrifuge to collect the volume at the bottom of the vial. Use this intermediate dilution when calculating final dilutions as recommended below. Store the vial at -20°C or below after dilution. Avoid cycles of freezing and thawing.
Stability:	Expiration date is three (3) months from date of receipt.
Database Link:	Q29412



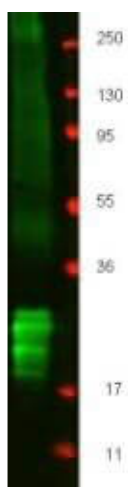
[View online »](#)

- Background:** Type I interferons comprise a vast and growing group of IFN proteins. Homologous molecules to type I IFNs are found in many species, including all mammals, and some have been identified in birds, reptiles, amphibians and fish species. The mammalian types are designated IFN-alpha, IFN-beta, IFN-kappa, IFN-delta, IFN-epsilon, IFN-tau, IFN-omega, and IFN-zeta (also known as limitin). The IFN-beta proteins are produced in large quantities by fibroblasts. They have antiviral activity which is mainly involved in innate immune response. Two types of IFN-beta proteins have been described.
- Synonyms:** rabbit anti-Interferon Beta Antibody, rabbit anti-IFN-beta antibody, Interferon-beta, interferon-beta/ polIFN-beta, IFN
- Note:** This protein A purified IFN-beta antibody has been tested by ELISA and Western blotting. Specific conditions for reactivity should be optimized by the end user. Expect a band approximately 19.5 kDa in size corresponding to swine IFN beta by western blotting in the appropriate cell lysate or extract.

Product images:



Western blot using Rockland's protein-A purified anti-swine IFN beta antibody shows detection of recombinant Swine IFN beta at about 19.5 kDa raised in yeast. Membrane was blocked with 3% BSA (BSA-30, diluted 1:10), and probed with 1 µg/mL primary antibody overnight at 4°C. After washing, membrane was probed with IRDye800® Conjugated Goat Anti-Rabbit IgG (p/n 611-132-122) for 45 min at room temperature.



Western blot using Rockland's protein-A purified anti-swine IFN beta antibody shows detection of recombinant Swine IFN beta at about 19.5 kDa raised in yeast. Membrane was blocked with 3% BSA (BSA-30, diluted 1:10), and probed with 1 $\mu\text{g}/\text{mL}$ primary antibody overnight at 4°C. After washing, membrane was probed with IRDye800® Conjugated Goat Anti-Rabbit IgG (p/n 611-132-122) for 45 min at room temperature.