

Product datasheet for **TA397303**

Sheep IgG (H&L) Antibody

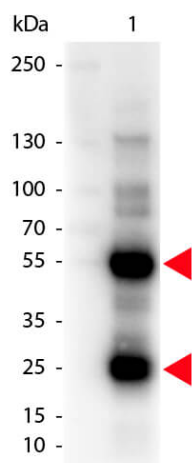
Product data:

Product Type:	Secondary Antibodies
Product Name:	Sheep IgG (H&L) Antibody
Applications:	ELISA, IHC, WB
Recommended Dilution:	WB: 1:2,000 - 1:10,000 IHC: 1:1,000 - 1:5,000 ELISA: 1:20,000 - 1:100,000
Host:	Donkey
Immunogen:	Sheep IgG whole molecule
Formulation:	0.01 M Sodium Phosphate, 0.15 M Sodium Chloride, pH 7.2
Reconstitution Method:	Restore with deionized water (or equivalent) - Reconstitution Volume: 5.0 mL
Concentration:	10.0 mg/mL - lot specific
Conjugation:	Unconjugated
Storage:	Store vial at 4° C prior to restoration. For extended storage aliquot contents and freeze at -20° C or below. Avoid cycles of freezing and thawing. Centrifuge product if not completely clear after standing at room temperature. This product is stable for several weeks at 4° C as an undiluted liquid. Dilute only prior to immediate use.
Note:	Anti-Sheep IgG unconjugated antibody has been tested by ELISA and western blot and is suitable for multiple immunoassays including immunoblotting (western or dot blot), ELISA, immunoperoxidase electron microscopy and immunohistochemistry as well as other peroxidase-antibody based enzymatic assays requiring lot-to-lot consistency. The antibody may be conjugated to the end user specifications.



[View online »](#)

Product images:



Western Blot of Donkey anti-Sheep IgG Antibody. Lane 1: Sheep IgG (p/n 013-0102). Load: 50 ng per lane. Primary antibody: Sheep antibody at 1,000 overnight at 4°C. Secondary antibody: Peroxidase donkey secondary antibody (p/n 616-1302) at 1:40,000 for 30 min at RT. Block: (p/n MB-070) for 30 min at RT. Predicted/Observed size: 28 & 55 kDa, 28 & 55 kDa for Sheep IgG.