

Product datasheet for **TA397292S**

Rabbit Polyclonal Antibody

Product data:

| | |
|-----------------------|--|
| Product Type: | Primary Antibodies |
| Applications: | ELISA, IHC, WB |
| Recommended Dilution: | WB: User Optimized IHC: User Optimized ELISA: User Optimized |
| Reactivity: | Rat |
| Host: | Rabbit |
| Clonality: | Polyclonal |
| Immunogen: | Rat Serum Proteins |
| Specificity: | Anti-Rat serum is an IgG fraction antibody purified from polyspecific antiserum by a multi-step process which includes delipidation, salt fractionation and ion exchange chromatography followed by extensive dialysis against the buffer stated above. Assay by immunoelectrophoresis resulted in a single precipitin arc against anti-Peroxidase and anti-Rabbit Serum. |
| Formulation: | 0.02 M Potassium Phosphate, 0.15 M Sodium Chloride, pH 7.2 |
| Concentration: | 1.0 mg/mL - lot specific |
| Conjugation: | HRP |
| Storage: | Store vial at -20° C or below prior to opening. This vial contains a relatively low volume of reagent (25 µL). To minimize loss of volume dilute 1:10 by adding 225 µL of the buffer stated above directly to the vial. Recap, mix thoroughly and briefly centrifuge to collect the volume at the bottom of the vial. Use this intermediate dilution when calculating final dilutions as recommended below. Store the vial at -20°C or below after dilution. Avoid cycles of freezing and thawing. |
| Stability: | Expiration date is one (1) year from date of receipt. |
| Background: | Anti-Rat serum antibody detects rat serum proteins. Serum proteins are those proteins remaining in portion of plasma after coagulation of blood, during which process the plasma protein fibrinogen is converted to fibrin and remains behind in the clot. Anti-Rat serum antibody is ideal for investigators involved in Cell Signaling, Cellular Biology and Signal Transduction research. |

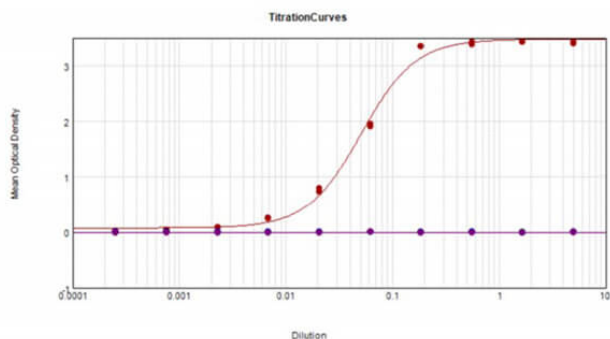


[View online »](#)

Synonyms: rabbit anti-Rat Serum Antibody Peroxidase Conjugated, rabbit anti-Rat Serum HRP conjugated Antibody

Note: Anti-Rat serum Peroxidase Conjugated antibody has been tested by Dot blot and ELISA and is suitable for western blotting, IP and for ELISA. Researchers should determine optimal titers for applications that are not stated below.

Product images:



ELISA Results of Rabbit Anti-Rat Serum Antibody Peroxidase Conjugated. Each well was coated in duplicate with 1.0 μg of Rat IgG (p/n 012-0102) [Red Line]. The working dilution is 20,000. The starting dilution of antibody was 5 $\mu\text{g}/\text{ml}$ and the X-axis represents the Log₁₀ of a 3-fold dilution. This titration is a 4-parameter curve fit where the IC₅₀ is defined as the titer of the antibody. Assay performed using TMB substrate (p/n TMBE-1000).