

Product datasheet for **TA397258S**

IL18 Rabbit Polyclonal Antibody

Product data:

Product Type:	Primary Antibodies
Applications:	ELISA, IF, IHC, WB
Recommended Dilution:	WB: 1:500 - 1:2,000 IHC: User Optimized IF: 1:50-1:200 ELISA: 1:1,000 - 1:5,000
Reactivity:	Mouse
Host:	Rabbit
Clonality:	Polyclonal
Immunogen:	The whole rabbit serum used to produce this IgG fraction antibody was prepared by repeated immunizations with native 157 aa mouse IL-18 produced in E.coli.
Specificity:	This is an IgG preparation of whole rabbit serum purified by protein A chromatography using a low endotoxin methodology. This antibody is primarily directed against mature 18,000 MW mouse IL-18 and is useful in determining its presence in various assays. This antibody will also recognize the 24,000 inactive precursor form of mouse IL-18. In general, this antibody also detects rat IL-18 in the same formats using similar dilutions. A control of similarly diluted LOW ENDOTOXIN CONTROL RABBIT IgG (code # 011-001-297) is recommended.
Formulation:	0.02 M Potassium Phosphate, 0.15 M Sodium Chloride, pH 7.2
Concentration:	1.0 mg/ml - lot specific
Conjugation:	Unconjugated
Storage:	Store vial at -20° C or below prior to opening. This vial contains a relatively low volume of reagent (25 µL). To minimize loss of volume dilute 1:10 by adding 225 µL of the buffer stated above directly to the vial. Recap, mix thoroughly and briefly centrifuge to collect the volume at the bottom of the vial. Use this intermediate dilution when calculating final dilutions as recommended below. Store the vial at -20°C or below after dilution. Avoid cycles of freezing and thawing.
Stability:	Expiration date is one (1) year from date of receipt.
Gene Name:	interleukin 18



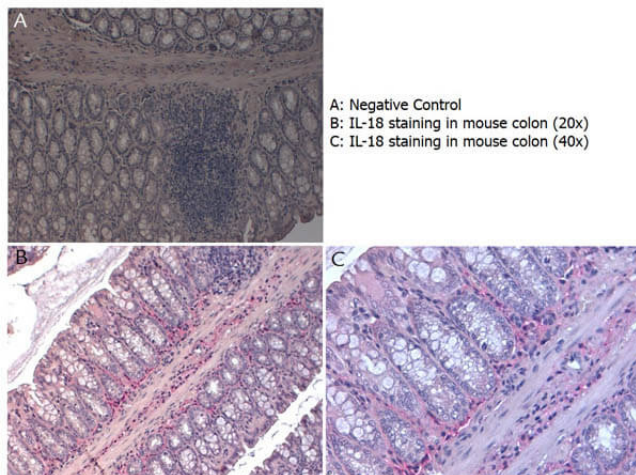
[View online »](#)

Database Link: [Entrez Gene 16173 Mouse P70380](#)

Background: Interleukin-18 (IL-18) is a member of the IL-1 cytokine family and was initially identified as an Interferon-gamma (IFN-gamma) inducing factor (IGIF). The IL-18 gene was originally cloned from liver cells and has since been shown to be produced by activated monocytes/macrophages, Kupffer cells, keratinocytes, glucocorticoid-secreting adrenal cortex cells, osteoblasts and dendritic cells. IL-18 is a 24 kDa, non-glycosylated polypeptide that lacks a classical signal sequence and possesses a structure recognizably similar to IL-1. IL-18 is synthesized as a bio-inactive propeptide that undergoes proteolytic cleavage by either ICE (interleukin-1 beta converting enzyme) or another caspase to generate a mature, bioactive, 18 kDa molecule. In both the mature and propeptide forms, IL-18 shows 64% aa sequence identity from mouse to human. IL-18 does not appear to show any primary sequence similarity to any other known cytokines. Rat IL-18 has also been isolated, and found to be 194 aa in length with a 91% aa sequence identity to mouse IL-18. Human IL-18 has been found to induce the production of IFN-gamma and GM-CSF while inhibiting the production of IL-10 by PBMC. With respect to human T cells, IL-18 enhances Th1 cytokine production and stimulates cell proliferation via an IL-2-dependent pathway. Human IL-18 can also inhibit the synthesis of IgE by B cells. Thus, IL-18 plays an important role in immunological and inflammatory reactions. Currently, the bioactivity of human IL-18 is often determined by its capacity to augment the levels of IFN-gamma produced by T cells as measured in tissue culture supernatants.

Synonyms: rabbit anti-IL-18 antibody, rabbit anti-interleukin-18 antibody, Iboctadekin antibody, IFN gamma inducing factor antibody, IGIF antibody, IL 1 gamma antibody, IL 18 antibody, IL 1g antibody, IL-1F4, IL 18, Interleukin 18, IL18, Interleukin18, IL1 F4, IL1F4, Ms IL-18, mouse IL18

Note: Anti-Mouse IL-18 has been tested in immunohistochemistry and immunofluorescence and is suitable for use in neutralizations, ELISA, and immunoblotting. Although untested, this reagent may be useful for radioimmunoassays, flow cytometry and immunoprecipitation. It recognizes the 18,000 MW mature (active) IL-18. Reactivity in other immunoassays is unknown.

Product images:

Immunohistochemistry with Rabbit anti-Mouse IL-18 antibody showing IL-18 staining in inflammatory cells of the mucous corium of mouse colon at 20x and 40x. Slide A is a negative control. Slides B and C show staining. Formalin fixed/paraffin embedded sections were subjected to heat induced epitope retrieval (HIER) at pH 6.2 and then incubated with mouse anti-IL-18 antibody at 4.0 µg/ml for 60 minutes. The reaction was developed using MACH 4 universal AP polymer detection system and visualized with WARP RED.