

## Product datasheet for **TA397252S**

### **Esrp1 Mouse Monoclonal Antibody [Clone ID: 27H12.F3.H5]**

#### **Product data:**

<b>Product Type:</b>	Primary Antibodies
<b>Clone Name:</b>	27H12.F3.H5
<b>Applications:</b>	ELISA, WB
<b>Recommended Dilution:</b>	<b>WB:</b> 1:1000 <b>ELISA:</b> 1:750,000
<b>Reactivity:</b>	Mouse
<b>Host:</b>	Mouse
<b>Isotype:</b>	IgG2b, kappa
<b>Clonality:</b>	Monoclonal
<b>Immunogen:</b>	Anti-Esrp-1 was produced by repeated immunizations of full length recombinant mouse Esrp-1 fusion protein.
<b>Specificity:</b>	This product is an IgG fraction antibody purified by Protein-A chromatography followed by extensive dialysis against the buffer stated above. This antibody reacts with mouse Esrp-1 protein. A BLAST analysis of the immunizing protein sequence shows 100% homology with Esrp-1 from mouse and a 91% sequence homology with Esrp-1 from human, pig, rat, opossum, horse, cattle, panda, dog, and chimpanzee. The binding epitope of this monoclonal antibody has not been mapped.
<b>Formulation:</b>	0.02 M Potassium Phosphate, 0.15 M Sodium Chloride, pH 7.2
<b>Concentration:</b>	1.0 mg/mL - lot specific
<b>Conjugation:</b>	Unconjugated
<b>Storage:</b>	Store vial at -20° C or below prior to opening. This vial contains a relatively low volume of reagent (25 µL). To minimize loss of volume dilute 1:10 by adding 225 µL of the buffer stated above directly to the vial. Recap, mix thoroughly and briefly centrifuge to collect the volume at the bottom of the vial. Use this intermediate dilution when calculating final dilutions as recommended below. Store the vial at -20°C or below after dilution. Avoid cycles of freezing and thawing.
<b>Stability:</b>	Expiration date is three (3) months from date of receipt.
<b>Gene Name:</b>	epithelial splicing regulatory protein 1



[View online »](#)

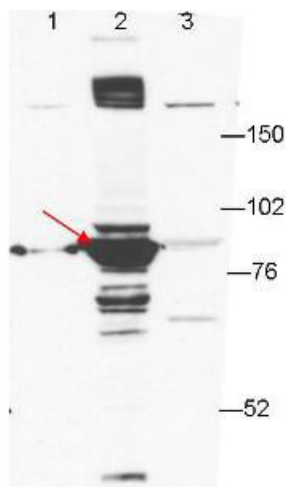
**Database Link:** [Entrez Gene 207920 Mouse Q3US41](#)

**Background:** Epithelial splicing regulatory protein 1 (Esrp-1) is an mRNA splicing factor that regulates the formation of epithelial cell-specific isoforms. It specifically regulates the expression of FGFR2-IIIb, an epithelial cell-specific isoform of FGFR2, and also regulates the splicing of CD44, CTNND1, ENAH, 3 transcripts that undergo changes in splicing during the epithelial-to-mesenchymal transition (EMT). Esrp-1 acts by directly binding specific sequences in mRNAs. It binds the GU-rich sequence motifs in the ISE/ISS-3, a cis-element regulatory region present in the mRNA of FGFR2.

**Synonyms:** mouse anti-Esrp-1 antibody, mouse anti-Esrp1 antibody, Rbm35a, Epithelial splicing regulatory protein 1, RNA-binding protein 35A, RNA-binding motif protein 35A

**Note:** This protein-A purified antibody has been tested for use western blotting. Specific conditions for reactivity should be optimized by the end user. Expect a band approximately 75.5 kDa in size corresponding to Esrp-1 by western blotting in the appropriate cell lysate or extract.

### Product images:



Anti-ESRP-1 by western blot shows detection of ESRP-1 seen in lane 2. Lane 1: GFP-transfected-293T cell extracts, Lane 2: ESRP-1-transfected-293T cell extracts, Lane 3: ESRP2-transfected 293T cell lysates. Briefly, each lane contains approximately 5  $\mu$ g of lysate. Primary antibody was used at a 1:1000 dilution in PBS-T plus milk, and reacted for 1hr at room temperature. The membrane was washed and reacted with a 1:10,000 dilution of an anti-mouse ECL antibody for 1hr at room temperature. Molecular weight estimation was made by comparison to prestained MW markers.