

Product datasheet for **TA397226S**

IL22 Rabbit Polyclonal Antibody

Product data:

Product Type:	Primary Antibodies
Applications:	ELISA, WB
Recommended Dilution:	WB: 1:1000-1:2000 ELISA: 1:20,000 - 1:50,000
Reactivity:	Human
Host:	Rabbit
Clonality:	Polyclonal
Immunogen:	Anti-IL-22 antibody was prepared from rabbit antiserum after repeated immunizations with a truncated form of recombinant human IL-22 protein from E. coli.
Specificity:	Anti-IL-22 is an IgG fraction antibody purified from monospecific antiserum by a multi-step process which includes delipidation, salt fractionation and ion exchange chromatography followed by extensive dialysis against the buffer stated above. This antibody is specific for human IL-22 protein. A BLAST analysis was used to suggest cross-reactivity with IL-22 from human sources based on 100% homology with the immunizing sequence. Cross-reactivity with IL-22 from other sources has not been determined.
Formulation:	0.02 M Potassium Phosphate, 0.15 M Sodium Chloride, pH 7.2
Concentration:	1.0 mg/mL - lot specific
Conjugation:	Unconjugated
Storage:	Store vial at -20° C or below prior to opening. This vial contains a relatively low volume of reagent (25 µL). To minimize loss of volume dilute 1:10 by adding 225 µL of the buffer stated above directly to the vial. Recap, mix thoroughly and briefly centrifuge to collect the volume at the bottom of the vial. Use this intermediate dilution when calculating final dilutions as recommended below. Store the vial at -20°C or below after dilution. Avoid cycles of freezing and thawing.
Stability:	Expiration date is one (1) year from date of receipt.
Gene Name:	interleukin 22
Database Link:	Entrez Gene 50616 Human Q9GZX6



[View online »](#)

Background:

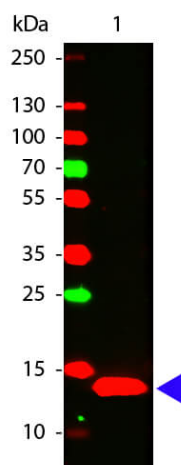
Interleukin-22 (IL-22) is a member of a group of cytokines called IL-10 family member, produced by activated dendritic cells and T lymphocytes. IL-22 inhibits IL-4 production by Th2 cells, and induces acute phase reactants in the liver and pancreas. IL-22 signals via the IL-22R and IL-10R β receptors to act as a potent mediator of the cellular inflammatory response. Recombinant human IL-22 is a non-disulfide-linked homodimer with a total molecular weight of 33.6 kDa. Anti-IL-22 antibody is ideal for researchers interested in cytokines and stem cell research.

Synonyms:

rabbit anti-IL-22 antibody, rabbit anti-interleukin-22 antibody, Interleukin22, IL22, ILTIF, ZCYTO18, IL22, Cytokine Zcyto18, IL-10-related T-cell-derived-inducible factor

Note:

IL-22 purified antibody has been tested in western blotting and suitable for ELISA. Specific conditions for reactivity should be optimized by the end user. Expect a band approximately 20 kDa in size corresponding to the human IL-22 protein by western blotting in appropriate cell lysate or extract.

Product images:

Western Blot of Rabbit anti-IL-22 antibody. Lane 1: Human IL-22 Recombinant Protein. Load: 50 ng per lane. Primary antibody: IL-22 antibody at 1:1,000 for overnight at 4°C. Secondary antibody: DyLight™ 649 rabbit secondary antibody (611-143-002) at 1:20,000 for 30 min at RT. Block: MB-070 for 30 min at RT. Predicted/Observed size: 14 kDa, 14 kDa for Human IL-22. Other band(s): None.