

## Product datasheet for **TA397224**

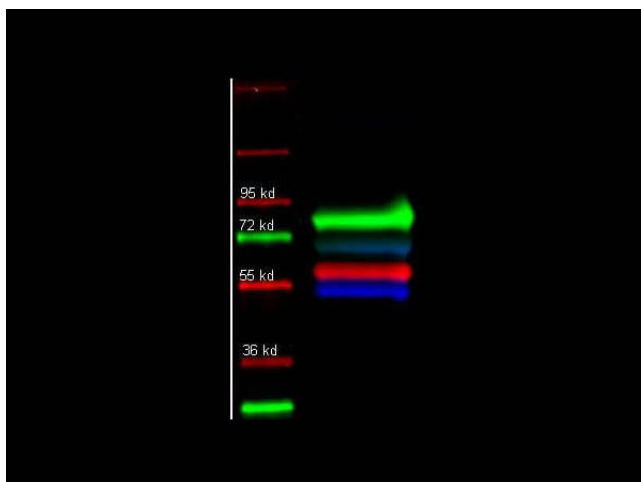
### Human IgG (H&L) Antibody Fluorescein Conjugated

#### Product data:

Product Type:	Secondary Antibodies
Product Name:	Human IgG (H&L) Antibody Fluorescein Conjugated
Applications:	FC, IF
Recommended Dilution:	<b>IF:</b> 1:1,000 - 1:5,000 <b>FC:</b> 1:500 - 1:2,500 <b>FLISA:</b> 1:10,000 - 1:50,000
Host:	Mouse
Immunogen:	Human IgG whole molecule
Formulation:	0.02 M Potassium Phosphate, 0.15 M Sodium Chloride, pH 7.2
Reconstitution Method:	Restore with deionized water (or equivalent) - Reconstitution Volume: 2.0 mL
Concentration:	10 mg/mL - lot specific
Conjugation:	FITC
Storage:	Store vial at 4° C prior to restoration. For extended storage aliquot contents and freeze at -20° C or below. Avoid cycles of freezing and thawing. Centrifuge product if not completely clear after standing at room temperature. This product is stable for several weeks at 4° C as an undiluted liquid. Dilute only prior to immediate use.
Note:	Anti-Human IgG (H&L) Fluorescein is designed for immunofluorescence microscopy, fluorescence based plate assays (FLISA) and fluorescent western blotting. This product is also suitable for multiplex analysis, including multicolor imaging, utilizing various commercial platforms.



[View online »](#)

**Product images:**

Rockland primary and DyLight conjugated secondary antibodies were used to detect: Human transferrin (1° 109-4134, green 2° 611-743-127); Alpha 1 anti trypsin (1° 100-101-147, red 2° 605-742-125); and Human IgG (1° 109-3102, Blue 2° 610-741-124) in a multiplex fluorescent western blot of human serum. Each primary antibody was diluted to 1:1000 in blocking buffer (MB-070) and incubated for 2 hrs at RT. Secondary antibodies diluted 1:10000 in blocking buffer and incubated ~ 1hr at 4°C. Imaged using the Biorad VersaDoc 4000.