

## Product datasheet for **TA397222S**

### IL17E (IL25) Mouse Monoclonal Antibody [Clone ID: 11K8B1]

#### Product data:

Product Type:	Primary Antibodies
Clone Name:	11K8B1
Applications:	ELISA, FC, WB
Recommended Dilution:	<b>WB:</b> 0.5µg/mL <b>FC:</b> 1µg/mL <b>ELISA:</b> 1:10,000 - 1:50,000
Reactivity:	Human
Host:	Mouse
Isotype:	IgG1
Clonality:	Monoclonal
Immunogen:	Anti-IL-17E (MOUSE) Monoclonal Antibody was produced in mouse by repeated immunizations with mature full length recombinant human IL-17E produced in E.coli followed by hybridoma development.
Specificity:	Anti-IL-17E was purified from concentrated tissue culture supernate by Protein G chromatography followed by extensive dialysis against the buffer stated above. This antibody is specific for human IL-17E protein. A BLAST analysis was used to suggest cross-reactivity with IL-17E from human sources based on 100% homology with the immunizing sequence. Cross-reactivity with IL-17E from other sources has not been determined.
Formulation:	0.02 M Potassium Phosphate, 0.15 M Sodium Chloride, pH 7.2
Concentration:	1.0mg/mL - lot specific
Conjugation:	Unconjugated
Storage:	Store vial at -20° C or below prior to opening. This vial contains a relatively low volume of reagent (25 µL). To minimize loss of volume dilute 1:10 by adding 225 µL of the buffer stated above directly to the vial. Recap, mix thoroughly and briefly centrifuge to collect the volume at the bottom of the vial. Use this intermediate dilution when calculating final dilutions as recommended below. Store the vial at -20°C or below after dilution. Avoid cycles of freezing and thawing.
Stability:	Expiration date is one (1) year from date of receipt.
Gene Name:	interleukin 25



[View online »](#)

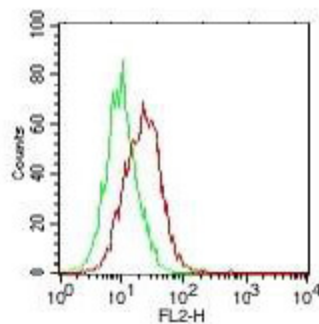
**Database Link:** [Entrez Gene 64806 Human Q9H293](#)

**Background:** Anti-IL17E recognizes IL-17E (also known as IL25). IL-17E is produced and secreted by intra-epithelial lymphocytes, lung epithelial cells, alveolar macrophages, eosinophils, basophils, NKT cells, mast cells and cells of the gastro-intestinal tract and uterus. IL-17E stimulates the production of Th2-type cytokines. IL-17E limits Th17 cell development by inducing the expression of IL-13 by dendritic cells or by inhibiting IL-23 production by macrophages. Induces activation of NF-kappa-B and stimulates production of the proinflammatory chemokine IL-8. A number of cytokines, including IL-17E, have been implicated as oncogenes, reflecting the importance of these proteins in cell growth and survival. Anti-IL-17E cytokine antibody is ideal for investigators involved in Immunology, Signal Transduction research, Cancer and pro-inflammatory pathologies.

**Synonyms:** mouse Anti-IL-17E Antibody, mouse anti-IL-25 antibody, Interleukin 25, IL-25, Interleukin 17E, IL-17E

**Note:** IL 17E antibody has been tested for use in Flow Cytometry and western blotting. Specific conditions for reactivity should be optimized by the end user.

### Product images:



Flow Cytometry of Mouse anti-IL-17E antibody. Cells: PC3 cells. Primary antibody: 1ug of IL-17E (red), control (green). Secondary antibody: anti-mouse IgG PE conjugated secondary antibody.