

Product datasheet for **TA397155**

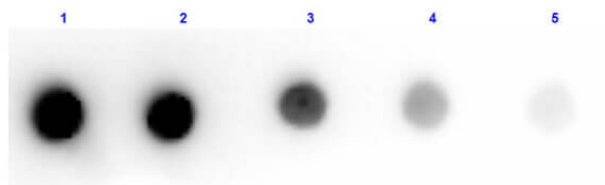
Dog IgM mu chain Antibody Peroxidase Conjugated

Product data:

Product Type:	Secondary Antibodies
Product Name:	Dog IgM mu chain Antibody Peroxidase Conjugated
Applications:	ELISA, IHC, WB
Recommended Dilution:	WB: 1:1,000 - 1:10,000 IHC: 1:500 - 1:2,500 ELISA: 1:10,000 - 1:50,000
Host:	Rabbit
Immunogen:	Dog IgM mu heavy chain
Formulation:	0.02 M Potassium Phosphate, 0.15 M Sodium Chloride, pH 7.2
Reconstitution Method:	Restore with deionized water (or equivalent) - Reconstitution Volume: 2.0 mL
Concentration:	10.0 mg/mL - lot specific
Conjugation:	HRP
Storage:	Store vial at 4° C prior to restoration. For extended storage aliquot contents and freeze at -20° C or below. Avoid cycles of freezing and thawing. Centrifuge product if not completely clear after standing at room temperature. This product is stable for several weeks at 4° C as an undiluted liquid. Dilute only prior to immediate use.
Note:	Anti-Dog IgM mu chain Peroxidase Conjugated has been tested dot blot and ELISA. This product is assayed against 1.0 ug of Dog IgM in a standard capture ELISA using ABTS (2,2'-azino-bis-[3-ethylbenthiazoline-6-sulfonic acid]) code # ABTS-100 as a substrate for 30 minutes at room temperature. A working dilution of 1:4,000 to 1:20,000 of the reconstitution concentration is suggested for this product.



[View online »](#)

Product images:

Dot Blot results of Rabbit Anti-Dog IgM Antibody Peroxidase Conjugated. Dots are Dog IgM at (1) 100ng, (2) 33.3ng, (3) 11.1ng, (4) 3.70ng, (5) 1.23ng. Blocking: MB-070 for 30 min at RT. Primary Antibody: none. Secondary Antibody: Rabbit Anti-Dog IgM-HRP at 1µg/mL for 1hr at RT. Imaged with BioRad ChemiDoc, Chemi filter.