

Product datasheet for **TA397131**

IL2 Rabbit Polyclonal Antibody

Product data:

Product Type:	Primary Antibodies
Applications:	ELISA, WB
Recommended Dilution:	WB: 1:500-1:2,000 ELISA: 1:20,000
Host:	Rabbit
Clonality:	Polyclonal
Immunogen:	This protein A purified antibody was prepared from whole rabbit serum produced by repeated immunizations with a recombinant protein raised in yeast corresponding to 134 amino acids of mature cat IL-2.
Specificity:	This product was protein A purified from monospecific antiserum by chromatography. This antibody is specific for cat IL-2 protein. A BLAST analysis was used to suggest cross-reactivity with IL-2 from cat based on 100% homology; cross-reactivity with Northern elephant seal and gray seal based on 90% homology with the immunizing sequence. Cross-reactivity with IL-2 from other sources has not been determined.
Formulation:	0.02 M Potassium Phosphate, 0.15 M Sodium Chloride, pH 7.2
Reconstitution Method:	Restore with deionized water (or equivalent) - Reconstitution Volume: 100 µL
Concentration:	1.0 mg/mL - lot specific
Conjugation:	Unconjugated
Storage:	Store vial at -20° C or below prior to opening. This vial contains a relatively low volume of reagent (25 µL). To minimize loss of volume dilute 1:10 by adding 225 µL of the buffer stated above directly to the vial. Recap, mix thoroughly and briefly centrifuge to collect the volume at the bottom of the vial. Use this intermediate dilution when calculating final dilutions as recommended below. Store the vial at -20°C or below after dilution. Avoid cycles of freezing and thawing.
Stability:	Expiration date is three (3) months from date of receipt.
Database Link:	Q07885



[View online »](#)

Background:

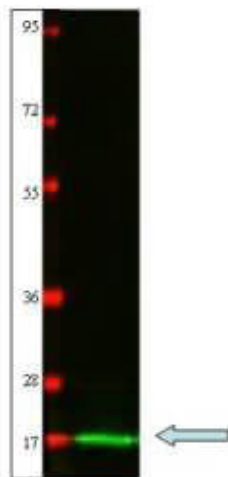
IL-2 is a member of a family of cytokines, which also includes IL-4, IL-7, IL-9, IL-15 and IL-21. All members of this family signal through a receptor complex that includes the common gamma chain. IL-2 signals through a receptor complex consisting of IL-2 specific IL-2 receptor alpha (CD25), IL-2 receptor beta (CD122) and the common gamma chain. The main function of IL-2 is to promote the development of T regulatory cells. IL-2 is produced by several cell types including, B cells, gamma-delta T cells, CD4+ T cells, CD8+ T cells, and eosinophils. It has been found to be similar to IL-15 in terms of function. Both IL-2 and IL-15 are able to facilitate production of immunoglobulins made by B cells and induce the differentiation and proliferation of natural killer cells. The primary differences between IL-2 and IL-15 are found in adaptive immune responses: IL-2 participates in maintenance of T-Regs and reduces self-reactive T cells while IL-15 is necessary for maintaining highly specific T cell responses by supporting survival of CD8 memory T cells.

Synonyms:

rabbit anti-Interleukin-2 antibody, rabbit anti-IL-2 antibody, IL2, T-cell growth factor, TCGF, Aldesleukin, Lymphokine

Note:

This protein A purified IL-2 antibody has been tested by ELISA and Western blotting. Specific conditions for reactivity should be optimized by the end user. Expect a band approximately 15.4 kDa in size corresponding to feline IL-2 by western blotting in the appropriate cell lysate or extract.

Product images:

Western blot using Rockland's protein-A purified anti-Cat IL-2 antibody shows detection of recombinant Cat IL-2 at 15.4 kDa, raised in yeast. Primary antibody was diluted to 1 µg/ml. 3% BSA from Rockland's p/n BSA-30 (Bovine Serum Albumin Solution) was used for blocking. Secondary antibody p/n 611-131-122 (Goat anti-Rabbit IgG IRDye® 800) was used at 1:20,000.



Western blot using Rockland's protein-A purified anti-Cat IL-2 antibody shows detection of recombinant Cat IL-2 at 15.4 kDa, raised in yeast.. Primary antibody was diluted to 1 $\mu\text{g}/\text{ml}$. 3% BSA from Rockland's BSA-30 (Bovine Serum Albumin Solution) was used for blocking. Secondary antibody 611-131-122 (Goat anti-Rabbit IgG IRDye® 800) was used at 1:20,000.