

## Product datasheet for **TA397130**

### CXCL8 Rabbit Polyclonal Antibody

#### Product data:

Product Type:	Primary Antibodies
Applications:	ELISA, WB
Recommended Dilution:	<b>WB:</b> 1:500-1:2,000 <b>ELISA:</b> 1:10,000 - 1:50,000
Host:	Rabbit
Clonality:	Polyclonal
Immunogen:	This protein A purified antibody was prepared from whole rabbit serum produced by repeated immunizations with a recombinant protein raised in yeast, corresponding to 79 amino acids of mature cat IL-8 protein.
Specificity:	This product was protein A purified from monospecific antiserum by chromatography. This antibody is specific for cat IL-8 protein. A BLAST analysis was used to suggest cross-reactivity with IL-8 from cat sources based on 100% homology with the immunizing sequence. Cross-reactivity with IL-8 from other sources has not been determined.
Formulation:	0.02 M Potassium Phosphate, 0.15 M Sodium Chloride, pH 7.2
Reconstitution Method:	Restore with deionized water (or equivalent) - Reconstitution Volume: 100 µL
Concentration:	1.0 mg/mL - lot specific
Conjugation:	Unconjugated
Storage:	Store vial at -20° C or below prior to opening. This vial contains a relatively low volume of reagent (25 µL). To minimize loss of volume dilute 1:10 by adding 225 µL of the buffer stated above directly to the vial. Recap, mix thoroughly and briefly centrifuge to collect the volume at the bottom of the vial. Use this intermediate dilution when calculating final dilutions as recommended below. Store the vial at -20°C or below after dilution. Avoid cycles of freezing and thawing.
Stability:	Expiration date is three (3) months from date of receipt.
Database Link:	<a href="#">Q9XSX5</a>



[View online »](#)

**Background:**

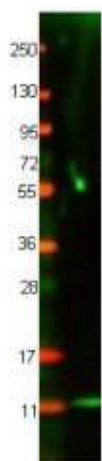
IL-8 (CXCL8) is a small cytokine belonging to the chemokine CXC subfamily. There have been 17 different CXC chemokines described in mammals. The members of the CXC chemokine subfamily have been subdivided into two categories - those with a specific amino acid sequence of glutamic acid-leucine-arginine (ELR) immediately before the first cysteine of the CXC motif (ELR-positive), and those without an ELR motif (ELR-negative). ELR-positive CXC chemokines specifically induce the migration of neutrophils, and interact with chemokine receptors CXCR1 and CXCR2. IL-8 is an ELR-positive CXC chemokine. The primary function of IL-8 is to recruit neutrophils to the site of inflammation. It also activates neutrophil functions and promotes angiogenesis. Anti-IL-8 antibody is ideal for investigators involved in Cancer, Cardiovascular and Immunology research.

**Synonyms:**

rabbit anti-IL-8 antibody, IL8, rabbit anti-Interleukin-8 antibody, C-X-C motif chemokine 8, CXCL8, Chemokine (C-X-C motif) ligand 8

**Note:**

This protein A purified CXCL8 antibody has been tested by Western blotting and is suitable for ELISA. Specific conditions for reactivity should be optimized by the end user. Expect a band approximately 8.9 kDa in size corresponding to cat IL-8 by western blotting in the appropriate cell lysate or extract.

**Product images:**


Western blot using Rockland's protein-A purified anti-Cat IL-8 antibody shows detection of recombinant Cat IL-8 at 8.9 kDa, raised in yeast. Primary antibody was diluted to 1 µg/ml. 3% BSA from Rockland's BSA-30 (Bovine Serum Albumin Solution) was used for blocking. Secondary antibody 611-131-122 (Goat anti-Rabbit IgG IRDye® 800) was used at 1:20,000.