

Product datasheet for **TA397112**

CXCL10 Rabbit Polyclonal Antibody

Product data:

Product Type:	Primary Antibodies
Applications:	ELISA, WB
Recommended Dilution:	WB: 1 µg/mL ELISA: 1:10,000
Reactivity:	Goat
Host:	Rabbit
Clonality:	Polyclonal
Immunogen:	This protein-A purified antibody was prepared from whole rabbit serum produced by repeated immunizations with a recombinant protein raised in yeast, corresponding to the 83 amino acids of the mature bovine CXCL10 protein.
Specificity:	This product was Protein-A purified from monospecific antiserum by chromatography. This antibody is specific for bovine CXCL10 protein. A BLAST analysis was used to suggest cross-reactivity with CXCL10 from bovine based on 100% homology with the immunizing sequence. Partial reactivity is expected against sheep and goat based on 94-95% homology. Cross-reactivity with CXCL10 from other sources has not been determined.
Formulation:	0.02 M Potassium Phosphate, 0.15 M Sodium Chloride, pH 7.2
Reconstitution Method:	Restore with deionized water (or equivalent) - Reconstitution Volume: 100 µL
Concentration:	1.0 mg/mL - lot specific
Conjugation:	Unconjugated
Storage:	Store vial at -20° C or below prior to opening. This vial contains a relatively low volume of reagent (25 µL). To minimize loss of volume dilute 1:10 by adding 225 µL of the buffer stated above directly to the vial. Recap, mix thoroughly and briefly centrifuge to collect the volume at the bottom of the vial. Use this intermediate dilution when calculating final dilutions as recommended below. Store the vial at -20°C or below after dilution. Avoid cycles of freezing and thawing.
Stability:	Expiration date is three (3) months from date of receipt.
Database Link:	Entrez Gene 615107 Bovine Q2KIQ8



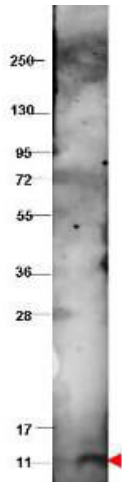
[View online »](#)

Background: CXCL10 is a secreted chemotactic cytokine for monocytes and T-lymphocytes. It is involved in the inflammatory response. CXCL10 can be upregulated in response to infection. It binds to CXCR3.

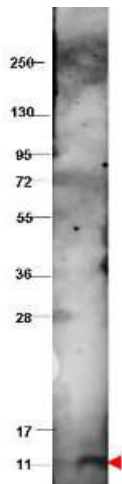
Synonyms: rabbit anti-CXCL10 Antibody, IP-10, C-X-C motif chemokine 10, Small-inducible cytokine B10

Note: This protein-A purified CXCL10 antibody has been tested by ELISA and Western blotting. Specific conditions for reactivity should be optimized by the end user. Expect a band approximately 9.3 kDa in size corresponding to bovine CXCL10 protein by western blotting in the appropriate cell lysate or extract.

Product images:



Western blot using Rockland's protein-A purified anti-bovine CXCL10 antibody shows detection of recombinant bovine CXCL10 at 9.3 kDa (arrowhead) raised in yeast. The protein was purified and resolved by SDS-PAGE, then transferred to PVDF membrane. Membrane was blocked with 3% BSA (BSA-30, diluted 1:10), and probed with 1 μ g/mL primary antibody overnight at 4°C. After washing, membrane was probed with IRDye800™ Conjugated Goat Anti-Rabbit IgG (p/n 611-132-122) for 45 min at room temperature.



Western blot using Rockland's protein-A purified anti-bovine CXCL10 antibody shows detection of recombinant bovine CXCL10 at 9.3 kDa (arrowhead) raised in yeast. The protein was purified and resolved by SDS-PAGE, then transferred to PVDF membrane. Membrane was blocked with 3% BSA (BSA-30, diluted 1:10), and probed with 1 μ g/mL primary antibody overnight at 4°C. After washing, membrane was probed with IRDye800™ Conjugated Goat Anti-Rabbit IgG (p/n 611-132-122) for 45 min at room temperature.