

## Product datasheet for **TA397111**

### IL36RN Rabbit Polyclonal Antibody

#### Product data:

Product Type:	Primary Antibodies
Applications:	ELISA, WB
Recommended Dilution:	<b>WB:</b> 1 µg/mL <b>ELISA:</b> 8000
Host:	Rabbit
Clonality:	Polyclonal
Immunogen:	This protein-A purified antibody was prepared from whole rabbit serum produced by repeated immunizations with a recombinant protein raised in yeast, corresponding to the 155 amino acids of the mature bovine IL-1F5 protein.
Specificity:	This product was Protein-A purified from monospecific antiserum by chromatography. This antibody is specific for bovine IL-1F5 protein. A BLAST analysis was used to suggest cross-reactivity with IL-1F5 from dog, panda, and ferret based on 90-92% homology with the immunizing sequence.
Formulation:	0.02 M Potassium Phosphate, 0.15 M Sodium Chloride, pH 7.2
Reconstitution Method:	Restore with deionized water (or equivalent) - Reconstitution Volume: 100 µL
Concentration:	1.0 mg/mL - lot specific
Conjugation:	Unconjugated
Storage:	Store vial at -20° C or below prior to opening. This vial contains a relatively low volume of reagent (25 µL). To minimize loss of volume dilute 1:10 by adding 225 µL of the buffer stated above directly to the vial. Recap, mix thoroughly and briefly centrifuge to collect the volume at the bottom of the vial. Use this intermediate dilution when calculating final dilutions as recommended below. Store the vial at -20°C or below after dilution. Avoid cycles of freezing and thawing.
Stability:	Expiration date is three (3) months from date of receipt.
Database Link:	<a href="#">Q0VC52</a>



[View online »](#)

**Background:**

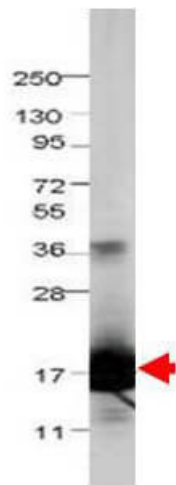
Interleukin-1F5 is a recently discovered cytokine which was shown to specifically inhibit the activation of NF-kappaB induced by interleukin 1 family, member 6 (IL1F6) in humans. There is very little published regarding the bovine IL1F5 protein. In the human, this gene and eight other interleukin 1 family genes form a cytokine gene cluster on chromosome 2. Expression of the gene appears to be restricted to various epithelial cell populations. Costelloe et al (2008) have identified SIGIRR [single immunoglobulin domain-containing IL1R-related protein] as a receptor for human IL1F5. Anti-IL-1F5 antibody is ideal for investigators involved in Signal Transduction and Immunology research.

**Synonyms:**

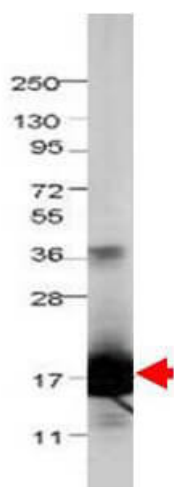
rabbit anti-IL-1F5 antibody, rabbit anti-Interleukin 1 family, member 5 (Delta)

**Note:**

This protein-A purified Interleukin-1F5 antibody has been tested by ELISA and Western blotting. Specific conditions for reactivity should be optimized by the end user. Expect a band approximately 17.1 kDa in size corresponding to bovine IL-1F5 protein by western blotting in the appropriate cell lysate or extract.

**Product images:**

Western blot using Rockland's Protein-A Purified anti-bovine IL-1F5 antibody shows detection of recombinant bovine IL-1F5 at 17.1 kDa (arrowhead) raised in yeast. The identity of the band at 36 kDa is not known. The protein was purified and resolved by SDS-PAGE, then transferred to PVDF membrane. Membrane was blocked with 3% BSA (BSA-30, diluted 1:10), and probed with 1 µg/mL primary antibody overnight at 4°C. After washing, membrane was probed with IRDye800™ Conjugated Goat Anti-Rabbit IgG (p/n 611-132-122) for 45 min at room temperature.



Western blot using Rockland's Protein-A Purified anti-bovine IL-1F5 antibody shows detection of recombinant bovine IL-1F5 at 17.1 kDa (arrowhead) raised in yeast. The identity of the band at 36 kDa is not known. The protein was purified and resolved by SDS-PAGE, then transferred to PVDF membrane. Membrane was blocked with 3% BSA (BSA-30, diluted 1:10), and probed with 1  $\mu\text{g}/\text{mL}$  primary antibody overnight at 4°C. After washing, membrane was probed with IRDye800™ Conjugated Goat Anti-Rabbit IgG (p/n 611-132-122) for 45 min at room temperature.