

Product datasheet for **TA397106**

Bovine IgG (H&L) Secondary Antibody

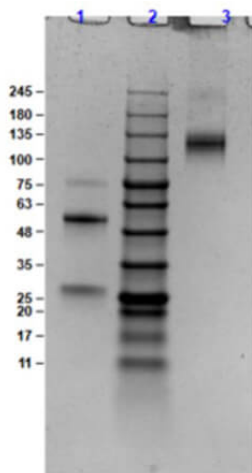
Product data:

Product Type:	Secondary Antibodies
Product Name:	Bovine IgG (H&L) Secondary Antibody
Applications:	ELISA, IHC, WB
Recommended Dilution:	WB: 1:2,000 - 1:10,000 IHC: 1:1,000 - 1:5,000 ELISA: 1:20,000 - 1:100,000
Host:	Goat
Immunogen:	Bovine IgG whole molecule
Formulation:	0.02 M Potassium Phosphate, 0.15 M Sodium Chloride, pH 7.2
Reconstitution Method:	Restore with deionized water (or equivalent) - Reconstitution Volume: 5.0 mL
Concentration:	10.0 mg/mL - lot specific
Conjugation:	Unconjugated
Storage:	Store vial at 4° C prior to restoration. For extended storage aliquot contents and freeze at -20° C or below. Avoid cycles of freezing and thawing. Centrifuge product if not completely clear after standing at room temperature. This product is stable for several weeks at 4° C as an undiluted liquid. Dilute only prior to immediate use.
Note:	Anti-Bovine IgG Secondary Antibodies have been tested by dot blot and are designed for Western Blotting, ELISA and Immunohistochemistry. Secondary antibodies can also be used for a variety of other applications such as Assay Development, Flow Cytometry and in situ hybridization.



[View online »](#)

Product images:



SDS PAGE Results of Goat Anti-Bovine IgG Antibody. Lane 1: Goat Anti-Bovine IgG Reduced [10µg]. Lane 2: Opal Prestained Molecular Weight Marker (p/n MB-210-0500). Lane 3: Goat Anti-Bovine IgG Non-Reduced [10µg]. 4-20% Gel, Coomassie Stained.