

## Product datasheet for **TA397104S**

### Chicken Polyclonal Antibody

#### Product data:

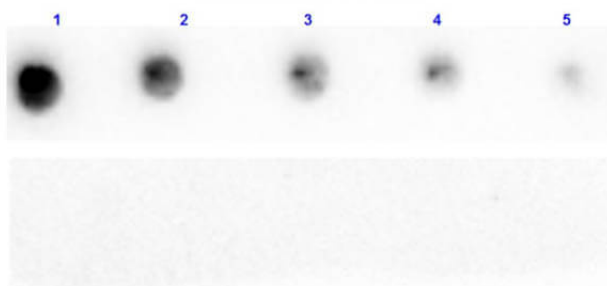
Product Type:	Primary Antibodies
Applications:	ELISA, WB
Recommended Dilution:	<b>WB:</b> 1:500 - 1:2,000 <b>ELISA:</b> 1:500 - 1:2,000
Host:	Chicken
Clonality:	Polyclonal
Immunogen:	This IgY fraction antibody was prepared from eggs of chickens laid after repeated immunizations with Protein A [Staphylococcus aureus].
Specificity:	This Anti-Protein A Antibody is an IgY fraction antibody purified from monospecific chicken egg yolks by a multi-step process which includes selective precipitation and salt fractionation followed by extensive dialysis against the buffer stated above. Assay by immunoelectrophoresis resulted in a single precipitin arc against purified and partially purified Protein A [Staphylococcus aureus] and anti-Chicken Serum. Cross reactivity against Protein A from other sources is unknown.
Formulation:	0.02 M Potassium Phosphate, 0.15 M Sodium Chloride, pH 7.2
Concentration:	1 mg/ml - lot specific
Conjugation:	Unconjugated
Storage:	Store vial at -20° C or below prior to opening. This vial contains a relatively low volume of reagent (25 µL). To minimize loss of volume dilute 1:10 by adding 225 µL of the buffer stated above directly to the vial. Recap, mix thoroughly and briefly centrifuge to collect the volume at the bottom of the vial. Use this intermediate dilution when calculating final dilutions as recommended below. Store the vial at -20°C or below after dilution. Avoid cycles of freezing and thawing.
Stability:	Expiration date is one (1) year from date of receipt.
Background:	Protein A is 56 kDA surface protein found in the cell wall of Staphylococcus aureus. Protein A has a high affinity to Human IgG, Mouse IgG and others and is therefore suitable for purification and detection of immunoglobulins.
Synonyms:	chicken anti-Protein A Antibody, chicken anti Protein A, chicken anti PA



[View online »](#)

**Note:** Anti-PROTEIN A (CHICKEN) Antibody has been tested by western blotting and suitable for ELISA. Although not tested, this antibody may also be useful for neutralization assays, immunohistochemistry, flow Cytometry, immunoprecipitation, immunodiffusion, conjugation and most immunological methods requiring high titer and specificity.

### Product images:



Dot Blot of Chicken Anti-Protein A Antibody. Dilutions of Protein A: (1) 100ng, (2) 33.3ng, (3) 11.1ng, (4) 3.7ng, and (5) 1.23ng. Top Blot incubated with Primary Antibody: 1 $\mu$ g/mL of Anti-Protein A Antibody for 1 hour at room temp. Bottom Blot incubated with Secondary Only: Rabbit Fab2 anti-Chicken Peroxidase conjugated (p/n 703-403-002) 1:40,000 for 30 min at room temp. Blocking Buffer: BlockOut Universal Blocker (p/n MB-073). Exposure 7 sec.