

Product datasheet for **TA397103S**

IacZ Chicken Polyclonal Antibody

Product data:

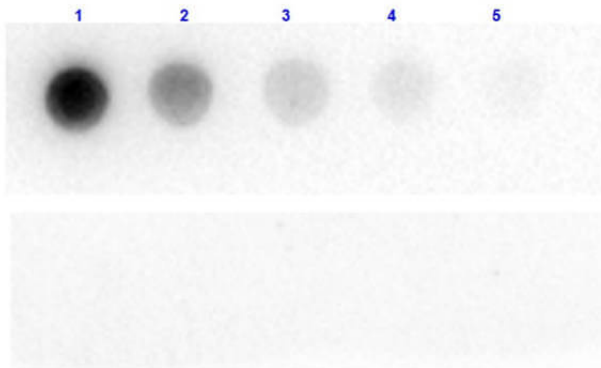
Product Type:	Primary Antibodies
Applications:	ELISA, WB
Recommended Dilution:	WB: 1:2,000-1:10,000 ELISA: 1:2,000 - 1:10,000
Reactivity:	Beta Galactosidase [E.coli]
Host:	Chicken
Clonality:	Polyclonal
Immunogen:	This IgY fraction antibody was prepared from eggs of chickens laid after repeated immunizations with full length native Beta Galactosidase isolated from E.coli
Specificity:	This Anti-Beta Galactosidase Antibody is an IgY fraction antibody purified from monospecific chicken egg yolks by a multi-step process which includes selective precipitation and salt fractionation followed by extensive dialysis against the buffer stated above. Assay by immunoelectrophoresis resulted in a single precipitin arc against purified and partially purified Beta Galactosidase [E.coli] and anti-Chicken Serum. Cross reactivity against Beta Galactosidase from other tissues and species may occur but have not been specifically determined. Very low background staining has been reported in various assays.
Formulation:	0.02 M Potassium Phosphate, 0.15 M Sodium Chloride, pH 7.2
Concentration:	1 mg/ml - lot specific
Conjugation:	Unconjugated
Storage:	Store vial at -20° C or below prior to opening. This vial contains a relatively low volume of reagent (25 µL). To minimize loss of volume dilute 1:10 by adding 225 µL of the buffer stated above directly to the vial. Recap, mix thoroughly and briefly centrifuge to collect the volume at the bottom of the vial. Use this intermediate dilution when calculating final dilutions as recommended below. Store the vial at -20°C or below after dilution. Avoid cycles of freezing and thawing.
Stability:	Expiration date is one (1) year from date of receipt.
Database Link:	P00722



[View online »](#)

- Background:** Anti Beta Galactosidase Antibody recognizes the enzyme beta galactosidase, or β -galactosidase, that is a component of assays used frequently in genetics, molecular biology (see X-gal) for a blue white screen, and other life sciences. IPTG induces production of β -galactosidase by binding and inhibiting the lac repressor. Since it is highly expressed and accumulated in lysosomes in senescent cells, it is used as a senescence biomarker both in vivo and in vitro in qualitative and quantitative assays, despite its limitations. Anti-beta Galactosidase Antibody is ideal for investigators involved in enzyme research.
- Synonyms:** chicken anti-Beta Galactosidase Antibody, chicken anti-Beta Gal Antibody, Beta Galactosidase [E.coli], BGAL, beta-galactosidase, beta-gal
- Note:** Anti-Beta-Gal (CHICKEN) Antibody has been tested for use in ELISA and immunoblotting. Although not tested, this antibody may also be useful for neutralization assays, immunohistochemistry, flow Cytometry, immunoprecipitation, immunodiffusion, conjugation and most immunological methods requiring high titer and specificity.

Product images:



Dot Blot of Chicken Anti-Beta Galactosidase Antibody. Dilutions of Beta Gal: (1) 100ng, (2) 33.3ng, (3) 11.1ng, (4) 3.7ng, and (5) 1.23ng. Top Blot incubated with Primary Antibody: 1 μ g/mL of Anti-Beta Galactosidase for 1 hour at room temp. Bottom Blot incubated with Secondary Only: Goat anti-Chicken Peroxidase conjugated (p/n 603-103-126) 1:40,000 for 30 min at room temp. Blocking Buffer: BlockOut Universal Blocker (p/n MB-073). Exposure 1 sec.