

## Product datasheet for **TA397098S**

### gox Sheep Polyclonal Antibody

#### Product data:

Product Type:	Primary Antibodies
Applications:	ELISA, WB
Recommended Dilution:	<b>WB:</b> 1:500 - 1:3,000 <b>ELISA:</b> 1:5,500 - 1:25,000
Reactivity:	Aspergillus niger
Host:	Sheep
Clonality:	Polyclonal
Immunogen:	Glucose Oxidase [Aspergillus niger]
Specificity:	Anti-GLUCOSE OXIDASE is an IgG fraction antibody purified from monospecific antiserum by a multi-step process which includes delipidation, salt fractionation and ion exchange chromatography followed by extensive dialysis against the buffer stated above. Assay by immunoelectrophoresis resulted in a single precipitin arc against anti-Sheep Serum as well as purified and partially purified Glucose Oxidase [Aspergillus niger]. Cross reactivity against Glucose Oxidase from other tissues and species may occur but have not been specifically determined.
Formulation:	0.02 M Potassium Phosphate, 0.15 M Sodium Chloride, pH 7.2
Concentration:	lot specific
Conjugation:	Unconjugated
Storage:	Store vial at -20° C or below prior to opening. This vial contains a relatively low volume of reagent (25 µL). To minimize loss of volume dilute 1:10 by adding 225 µL of the buffer stated above directly to the vial. Recap, mix thoroughly and briefly centrifuge to collect the volume at the bottom of the vial. Use this intermediate dilution when calculating final dilutions as recommended below. Store the vial at -20°C or below after dilution. Avoid cycles of freezing and thawing.
Stability:	Expiration date is one (1) year from date of receipt.
Database Link:	<a href="#">P13006</a>



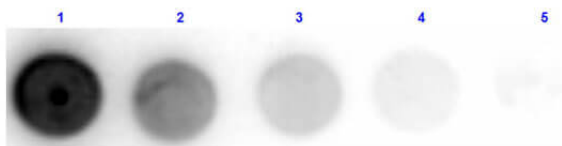
[View online »](#)

**Background:** Glucose Oxidase enzyme is widely applied for the determination of glucose in body fluids and in removing residual glucose or oxygen from foods and beverages. Furthermore, glucose oxidase-producing molds such as aspergillus and penicillium species are used for the biological production of gluconic acid.

**Synonyms:** sheep anti-Glucose Oxidase Antibody, Beta D Glucose Oxygen 1 Oxido Reductase antibody, Glucose oxidase (Precursor) antibody, Glucose Oxyhydrase antibody, GOD antibody

**Note:** Glucose Oxidase antibody has been tested by dot blot and is suitable to be assayed against 1.0 ug of Glucose Oxidase [Aspergillus niger] in a standard ELISA using Peroxidase conjugated Affinity Purified anti-Sheep IgG [H&L] (Rabbit) code #613-4302 and (ABTS (2,2'-azino-bis-[3-ethylbenthiiazoline-6-sulfonic acid]) code # ABTS-100 as a substrate for 30 minutes at room temperature. A working dilution of 1:2,000 to 1:10,000 of the reconstitution concentration is suggested for this product.

### Product images:



Dot Blot results of Sheep Anti-Glucose Oxidase Antibody. Dots are Glucose Oxidase at (1) 100ng, (2) 33.3ng, (3) 11.1ng, (4) 3.70ng, (5) 1.23ng. Blocking: MB-070 for 30 min at RT. Primary Antibody: Sheep Anti-Glucose Oxidase Antibody at 10µg/mL for 1hr at RT. Secondary Antibody: Donkey Anti-Sheep-HRP (p/n 613-703-168) at 1:40,000 for 30min at RT. Imaged with BioRad ChemiDoc, Chemi filter.