

## Product datasheet for **TA397095S**

### LPO Sheep Polyclonal Antibody

#### Product data:

Product Type:	Primary Antibodies
Applications:	ELISA, IP, WB
Recommended Dilution:	<b>WB:</b> 1:50 - 1:500 <b>ELISA:</b> 1:500 - 1:2,000
Host:	Sheep
Clonality:	Polyclonal
Immunogen:	Lactoperoxidase [Bovine Milk]
Specificity:	Anti-Lactoperoxidase (Bovine Milk) (Sheep) Antibody Biotin Conjugated is an IgG fraction antibody purified from monospecific antiserum by a multi-step process which includes delipidation, salt fractionation and ion exchange chromatography followed by extensive dialysis against the buffer stated above. Assay by immunoelectrophoresis resulted in a single precipitin arc against anti-Biotin, anti-Sheep Serum as well as purified and partially purified Lactoperoxidase [Bovine Milk]. Cross reactivity against Lactoperoxidase from other sources is unknown.
Formulation:	0.02 M Potassium Phosphate, 0.15 M Sodium Chloride, pH 7.2
Concentration:	1.0 mg/mL - lot specific
Conjugation:	Biotin
Storage:	Store vial at -20° C or below prior to opening. This vial contains a relatively low volume of reagent (25 µL). To minimize loss of volume dilute 1:10 by adding 225 µL of the buffer stated above directly to the vial. Recap, mix thoroughly and briefly centrifuge to collect the volume at the bottom of the vial. Use this intermediate dilution when calculating final dilutions as recommended below. Store the vial at -20°C or below after dilution. Avoid cycles of freezing and thawing.
Stability:	Expiration date is one (1) year from date of receipt.
Database Link:	<a href="#">P80025</a>



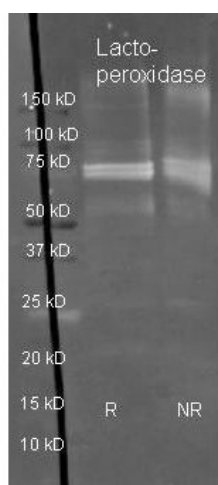
[View online »](#)

**Background:** Lactoperoxidase antibody recognizes the lactoperoxidase protein. Lactoperoxidase catalyzes the oxidation of a number of inorganic and organic substrates by hydrogen peroxide. Lactoperoxidase plays an important role in killing bacteria in milk. Lactoperoxidase conjugated to Biotin is used to detect the specific target of the lactoperoxidase protein. Lactoperoxidase conjugated to Biotin is suitable for researchers in immunology and biochemistry.

**Synonyms:** sheep anti-Lactoperoxidase biotin conjugated Antibody, biotin conjugated sheep anti-Lactoperoxidase Antibody, LPO antibody, Salivary peroxidase antibody, SAPX antibody, SPO antibody

**Note:** Anti-Lactoperoxidase Biotin Conjugated Antibody has been tested by Dot blot and western blot and is suitable to be assayed against 1.0 ug of Lactoperoxidase in a standard capture ELISA using Peroxidase Conjugated Streptavidin #S000-03 and ABTS (2,2'-azino-bis-[3-ethylbenthiiazoline-6-sulfonic acid]) code # ABTS-100 as a substrate for 30 minutes at room temperature. A working dilution of 1:1,000 to 1:6,000 of the reconstitution concentration is suggested for Anti-Lactoperoxidase.

### Product images:



Rockland Sheep anti Lactoperoxidase antibody (200-601-146 lot 5243) was used to detect Lactoperoxidase under reducing (R) and non-reducing (NR) conditions. Reduced samples of purified target proteins contained 4% BME and were boiled for 5 minutes. Samples of ~1ug of protein per lane were run by SDS-PAGE. Protein was transferred to nitrocellulose and probed with 1:3000 dilution of primary antibody (ON 4 C in MB-070). Detection shown was using Dylight 488 conjugated secondary antibody (605-741-125 lot 21094 1:10K in TBS/MB-070 1 hr RT). Images were collected using the BioRad VersaDoc System