

## Product datasheet for **TA397088S**

### MDH1 Sheep Polyclonal Antibody

#### Product data:

Product Type:	Primary Antibodies
Applications:	ELISA, IHC, IP, WB
Recommended Dilution:	<b>WB:</b> 1:1,000 - 1:5,000 <b>IHC:</b> 1:500 - 1:2,500 <b>ELISA:</b> 1:500 - 1:1,000
Reactivity:	Porcine
Host:	Sheep
Clonality:	Polyclonal
Immunogen:	Malate Dehydrogenase [Pig Heart]
Specificity:	Malate Dehydrogenase is an IgG fraction antibody purified from monospecific antiserum by a multi-step process which includes delipidation, salt fractionation and ion exchange chromatography followed by extensive dialysis against the buffer stated above. Assay by immunoelectrophoresis resulted in a single precipitin arc against anti-Peroxidase, anti-Sheep Serum as well as purified and partially purified Malate Dehydrogenase [Pig Heart]. Cross reactivity against Malate Dehydrogenase from other sources may occur but has not been specifically determined.
Formulation:	0.02 M Potassium Phosphate, 0.15 M Sodium Chloride, pH 7.2
Concentration:	1 mg/mL - lot specific
Conjugation:	HRP
Storage:	Store vial at -20° C or below prior to opening. This vial contains a relatively low volume of reagent (25 µL). To minimize loss of volume dilute 1:10 by adding 225 µL of the buffer stated above directly to the vial. Recap, mix thoroughly and briefly centrifuge to collect the volume at the bottom of the vial. Use this intermediate dilution when calculating final dilutions as recommended below. Store the vial at -20°C or below after dilution. Avoid cycles of freezing and thawing.
Stability:	Expiration date is one (1) year from date of receipt.
Database Link:	<a href="#">P11708</a>



[View online »](#)

**Background:**

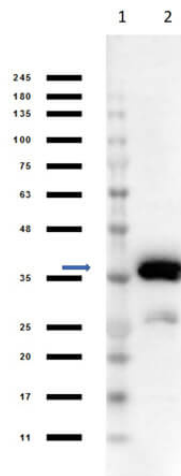
Malate Dehydrogenase is an enzyme that reversibly catalyzes the oxidation of malate to oxaloacetate using the reduction of NAD<sup>+</sup> to NADH. Malate Dehydrogenase is involved in gluconeogenesis, the synthesis of glucose from smaller molecules. There are two main isoforms in eukaryotic cells. One is found in the mitochondrial matrix the other is found in the cytoplasm.

**Synonyms:**

sheep anti-Malate Dehydrogenase HRP conjugated Antibody, peroxidase conjugated sheep anti-Malate Dehydrogenase Antibody, cytoplasmic, Cytosolic malate dehydrogenase

**Note:**

Anti-Malate Dehydrogenase Peroxidase Conjugated has been tested by western blot and is useful in ELISA and immunohistochemistry. Optimal titers should be obtained by researchers.

**Product images:**

Western Blot of Sheep Anti-Malate Dehydrogenase Antibody Peroxidase Conjugated. Lane 1: Opal Prestained Molecular Weight Marker (p/n MB-210-0500). Lane 2: Malate Dehydrogenase [0.05 $\mu$ g]. Primary Antibody: Anti-Malate Dehydrogenase HRP at 1:1000 for 1 hr at RT. Secondary Antibody: none. Blocking Buffer: BlockOut (MB-073) for 30mins at RT. Predicted MW: 30-35kDa. Exposure: 1sec.