

Product datasheet for **TA397087**

MDH1 Sheep Polyclonal Antibody

Product data:

Product Type:	Primary Antibodies
Applications:	ELISA, IHC, IP, WB
Recommended Dilution:	WB: 1:1,000 - 1:5,000 IHC: 1:50 - 1:250 ELISA: 1:1,000 - 1:5,000
Reactivity:	Porcine
Host:	Sheep
Clonality:	Polyclonal
Immunogen:	Malate Dehydrogenase [Pig Heart]
Specificity:	Malate Dehydrogenase is an IgG fraction antibody purified from monospecific antiserum by a multi-step process which includes delipidation, salt fractionation and ion exchange chromatography followed by extensive dialysis against the buffer stated above. Assay by immunoelectrophoresis resulted in a single precipitin arc against anti-Peroxidase, anti-Sheep Serum as well as purified and partially purified Malate Dehydrogenase [Pig Heart]. Cross reactivity against Malate Dehydrogenase from other sources may occur but has not been specifically determined.
Formulation:	0.02 M Potassium Phosphate, 0.15 M Sodium Chloride, pH 7.2
Reconstitution Method:	Restore with deionized water (or equivalent) - Reconstitution Volume: 100 µL
Concentration:	1 mg/ml - lot specific
Conjugation:	HRP
Storage:	Store vial at 4° C prior to restoration. For extended storage aliquot contents and freeze at -20° C or below. Avoid cycles of freezing and thawing. Centrifuge product if not completely clear after standing at room temperature. This product is stable for several weeks at 4° C as an undiluted liquid. Dilute only prior to immediate use.
Stability:	Expiration date is one (1) year from date of receipt.
Database Link:	P11708



[View online »](#)

Background:

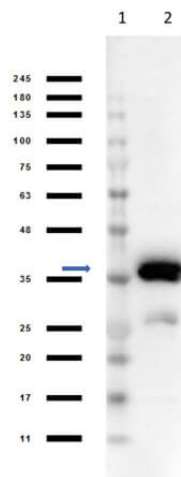
Malate Dehydrogenase is an enzyme that reversibly catalyzes the oxidation of malate to oxaloacetate using the reduction of NAD⁺ to NADH. Malate Dehydrogenase is involved in gluconeogenesis, the synthesis of glucose from smaller molecules. There are two main isoforms in eukaryotic cells. One is found in the mitochondrial matrix the other is found in the cytoplasm.

Synonyms:

sheep anti-Malate Dehydrogenase HRP conjugated Antibody, peroxidase conjugated sheep anti-Malate Dehydrogenase Antibody, cytoplasmic, Cytosolic malate dehydrogenase

Note:

Anti-Malate Dehydrogenase Peroxidase Conjugated has been tested by western blot and is useful in ELISA and immunohistochemistry. Optimal titers should be obtained by researchers.

Product images:

Western Blot of Sheep Anti-Malate Dehydrogenase Antibody Peroxidase Conjugated. Lane 1: Opal Prestained Molecular Weight Marker (p/n MB-210-0500). Lane 2: Malate Dehydrogenase [0.05 μ g]. Primary Antibody: Anti-Malate Dehydrogenase HRP at 1:1000 for 1 hr at RT. Secondary Antibody: none. Blocking Buffer: BlockOut (MB-073) for 30mins at RT. Predicted MW: 30-35kDa. Exposure: 1sec.