

Product datasheet for **TA397086S**

GOT1 Sheep Polyclonal Antibody

Product data:

Product Type:	Primary Antibodies
Applications:	ELISA, WB
Recommended Dilution:	WB: 1:1,000 - 1:5,000 ELISA: 1:10,000 - 1:40,000
Reactivity:	Porcine
Host:	Sheep
Clonality:	Polyclonal
Immunogen:	Aspartate Aminotransferase (AST) [Pig Heart]
Specificity:	Aspartate Transaminase is an IgG fraction antibody purified from monospecific antiserum by a multi-step process which includes delipidation, salt fractionation and ion exchange chromatography followed by extensive dialysis against the buffer stated above. Assay by immunoelectrophoresis resulted in a single precipitin arc against anti-Peroxidase, anti-Sheep Serum as well as purified and partially purified Aspartate Aminotransferase (AST) [Pig Heart]. Cross reactivity against Aspartate Aminotransferase (AST) from other sources may occur but has not been specifically determined.
Formulation:	0.02 M Potassium Phosphate, 0.15 M Sodium Chloride, pH 7.2
Concentration:	1 mg/mL - lot specific
Conjugation:	HRP
Storage:	Store vial at -20° C or below prior to opening. This vial contains a relatively low volume of reagent (25 µL). To minimize loss of volume dilute 1:10 by adding 225 µL of the buffer stated above directly to the vial. Recap, mix thoroughly and briefly centrifuge to collect the volume at the bottom of the vial. Use this intermediate dilution when calculating final dilutions as recommended below. Store the vial at -20°C or below after dilution. Avoid cycles of freezing and thawing.
Stability:	Expiration date is one (1) year from date of receipt.
Database Link:	<u>P00503</u>

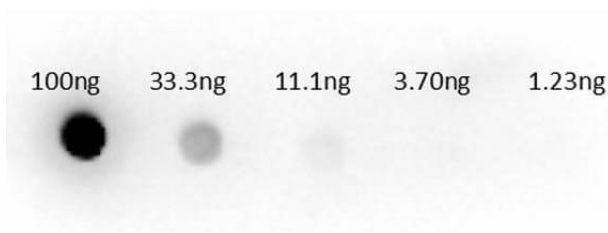
[View online »](#)

Background: Aspartate Transaminase is an important regulator of levels of glutamate, the major excitatory neurotransmitter of the vertebrate central nervous system. It acts as a scavenger of glutamate in brain neuroprotection. The aspartate aminotransferase activity is involved in hepatic glucose synthesis during development and in adipocyte glyceroneogenesis. Aspartate Transaminase is found in the liver, heart, skeletal muscle, kidneys, brain, and red blood cells, and it is commonly measured clinically as a marker for liver health.

Synonyms: sheep anti-Aspartate Transaminase HRP conjugated Antibody, peroxidase conjugated sheep anti-Aspartate Transaminase Antibody, Aspartate aminotransferase 1 antibody, Aspartate aminotransferase cytoplasmic antibody, Aspartate aminotransferase cytosolic antibody, ec 2.6.1.1 antibody, GIG 18 antibody, GIG18 antibody, Glutamate oxaloacetate transaminase 1 antibody

Note: Anti-Aspartate Transaminase Peroxidase Conjugated has been tested by dot blot and is suitable to be assayed against 1.0 ug of Aspartate Aminotransferase (AST) [Pig Heart] in a standard capture ELISA using ABTS (2,2'-azino-bis-[3-ethylbenthiazoline-6-sulfonic acid]) code # ABTS-100 as a substrate for 30 minutes at room temperature. A working dilution of 1:20,000 to 1:100,000 of the reconstitution concentration is suggested for this product.

Product images:



Dot Blot of Sheep anti-Aspartate Transaminase Antibody. Lane 1: 100ng. Lane 2: 33.3ng. Lane 3: 11.1ng. Lane 4: 3.7ng. Lane 5: 1.23ng. Secondary Antibody: Sh-a-Aspartate Transaminase (AST) HRP 200-603-144 at 1µg/mL. Blocking Buffer: BlockOut MB-073 for 30 min at RT.