

## Product datasheet for **TA397082S**

### LPO Sheep Polyclonal Antibody

#### Product data:

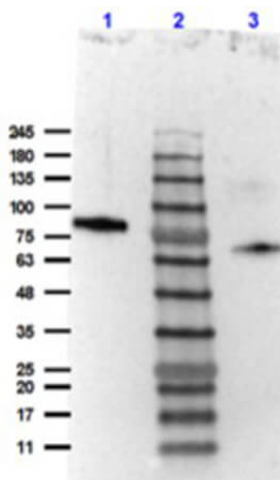
Product Type:	Primary Antibodies
Applications:	ELISA, IP, WB
Recommended Dilution:	<b>WB:</b> 1:500 - 1:5,000 <b>ELISA:</b> 1:5,000 - 1:20,000
Host:	Sheep
Clonality:	Polyclonal
Immunogen:	Lactoperoxidase [Bovine Milk]
Specificity:	Anti-LACTOPEROXIDASE is an IgG fraction antibody purified from monospecific antiserum by a multi-step process which includes delipidation, salt fractionation and ion exchange chromatography followed by extensive dialysis against the buffer stated above. Assay by immunoelectrophoresis resulted in a single precipitin arc against anti-Sheep Serum as well as purified and partially purified Lactoperoxidase [Bovine Milk]. Cross reactivity against Lactoperoxidase from other tissues and species may occur but have not been specifically determined.
Formulation:	0.02 M Potassium Phosphate, 0.15 M Sodium Chloride, pH 7.2
Concentration:	1 mg/mL - lot specific
Conjugation:	Unconjugated
Storage:	Store vial at -20° C or below prior to opening. This vial contains a relatively low volume of reagent (25 µL). To minimize loss of volume dilute 1:10 by adding 225 µL of the buffer stated above directly to the vial. Recap, mix thoroughly and briefly centrifuge to collect the volume at the bottom of the vial. Use this intermediate dilution when calculating final dilutions as recommended below. Store the vial at -20°C or below after dilution. Avoid cycles of freezing and thawing.
Stability:	Expiration date is one (1) year from date of receipt.
Database Link:	<a href="#">P80025</a>



[View online »](#)

- Background:** Lactoperoxidase is an antimicrobial agent which utilizes hydrogen peroxide and thiocyanate (SCN) to generate the antimicrobial substance hypothiocyanous acid (HOSCN). It may protect the udder from infection and promote growth in newborn calves. It inhibits growth of the following bacterial species: E.coli, K.pneumoniae, P.aeruginosa, S.sonnei, S.saphrophyticus, S.epidermidis, and S.dysenteriae.
- Synonyms:** sheep anti-Lactoperoxidase Antibody, LPO antibody, Salivary peroxidase antibody, SAPX antibody, SPO antibody
- Note:** Lactoperoxidase antibody has been tested by western blot and is suitable to be assayed against 1.0 ug of Lactoperoxidase [Bovine Milk] in a standard ELISA using Peroxidase conjugated Affinity Purified anti-Sheep IgG [H&L] (Rabbit) code #613-4302 and (ABTS (2,2'-azino-bis-[3-ethylbenthiazoline-6-sulfonic acid]) code # ABTS-100 as a substrate for 30 minutes at room temperature. A working dilution of 1:1,000 to 1:5,000 of the reconstitution concentration is suggested for this product.

### Product images:



Western Blot of Sheep Anti-Lactoperoxidase (bovine milk) Antibody. Lane 1: Lactoperoxidase Reduced [0.1 µg]. Lane 2: Opal prestained molecular weight marker (p/n MB-210-0500). Lane 3: Lactoperoxidase Non-Reduced [0.1 µg]. Primary Antibody: Anti-Lactoperoxidase at 1:500 overnight at 4°C. Secondary Antibody: Rabbit Anti-Sheep IgG HRP (p/n 613-4302) at 1:40,000 for 30mins at RT. Blocking: BlockOut buffer (p/n MB-073) 1 hr RT. Expected MW: 78kDa. Exposure: 10 sec.