

Product datasheet for **TA397081S**

MDH1 Sheep Polyclonal Antibody

Product data:

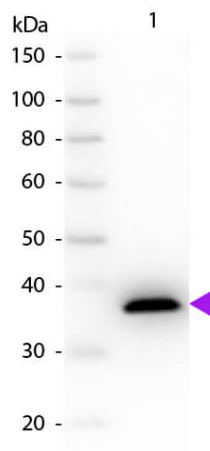
Product Type:	Primary Antibodies
Applications:	ELISA, IP, WB
Recommended Dilution:	WB: 1:500 - 1:5,000 ELISA: 1:5,000 - 1:20,000
Reactivity:	Porcine
Host:	Sheep
Clonality:	Polyclonal
Immunogen:	Malate Dehydrogenase [Pig Heart]
Specificity:	Anti-MALATE DEHYDROGENASE is an IgG fraction antibody purified from monospecific antiserum by a multi-step process which includes delipidation, salt fractionation and ion exchange chromatography followed by extensive dialysis against the buffer stated above. Assay by immunoelectrophoresis resulted in a single precipitin arc against anti-Sheep Serum as well as purified and partially purified Malate Dehydrogenase [Pig Heart]. Cross reactivity against Malate Dehydrogenase from other tissues and species may occur but have not been specifically determined.
Formulation:	0.02 M Potassium Phosphate, 0.15 M Sodium Chloride, pH 7.2
Concentration:	1.0 mg/ml - lot specific
Conjugation:	Unconjugated
Storage:	Store vial at -20° C or below prior to opening. This vial contains a relatively low volume of reagent (25 µL). To minimize loss of volume dilute 1:10 by adding 225 µL of the buffer stated above directly to the vial. Recap, mix thoroughly and briefly centrifuge to collect the volume at the bottom of the vial. Use this intermediate dilution when calculating final dilutions as recommended below. Store the vial at -20°C or below after dilution. Avoid cycles of freezing and thawing.
Stability:	Expiration date is one (1) year from date of receipt.
Database Link:	P11708
Background:	Catalytic activity of Malate Dehydrogenase is (S)-malate + NAD ⁺ = oxaloacetate + NADH.
Synonyms:	sheep anti-Malate Dehydrogenase Antibody, Malate dehydrogenase, cytoplasmic, Cytosolic malate dehydrogenase



[View online »](#)

Note: MALATE DEHYDROGENASE antibody has been tested by western blot and is suitable to be assayed against 1.0 ug of Malate Dehydrogenase [Pig Heart] in a standard ELISA using Peroxidase conjugated Affinity Purified anti-Sheep IgG [H&L] (Goat) code #611-1302 and (ABTS (2,2'-azino-bis-[3-ethylbenthiazoline-6-sulfonic acid]) code # ABTS-100 as a substrate for 30 minutes at room temperature. A working dilution of 1:10,000 to 1:40,000 of the reconstitution concentration is suggested for this product.

Product images:



Western Blot of Sheep anti-Malate Dehydrogenase antibody. Lane 1: Malate Dehydrogenase. Load: 50 ng per lane. Primary antibody: Malate Dehydrogenase antibody at 1:1,000 for overnight at 4°C. Secondary antibody: Peroxidase sheep secondary antibody (p/n 613-4302) at 1:40,000 for 30 min at RT. Block: MB-070 for 30 min at RT. Predicted/Observed size: 36 kDa, 36 kDa for Malate Dehydrogenase.