

Product datasheet for **TA397080**

MDH1 Sheep Polyclonal Antibody

Product data:

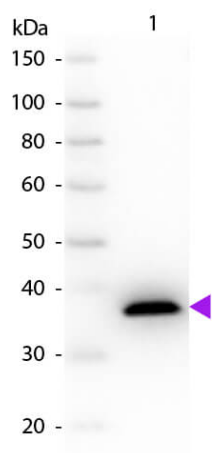
Product Type:	Primary Antibodies
Applications:	ELISA, IP, WB
Recommended Dilution:	WB: 1:500 - 1:5,000 ELISA: 1:5,000 - 1:20,000
Reactivity:	Porcine
Host:	Sheep
Clonality:	Polyclonal
Immunogen:	Malate Dehydrogenase [Pig Heart]
Specificity:	Anti-MALATE DEHYDROGENASE is an IgG fraction antibody purified from monospecific antiserum by a multi-step process which includes delipidation, salt fractionation and ion exchange chromatography followed by extensive dialysis against the buffer stated above. Assay by immunoelectrophoresis resulted in a single precipitin arc against anti-Sheep Serum as well as purified and partially purified Malate Dehydrogenase [Pig Heart]. Cross reactivity against Malate Dehydrogenase from other tissues and species may occur but have not been specifically determined.
Formulation:	0.02 M Potassium Phosphate, 0.15 M Sodium Chloride, pH 7.2
Reconstitution Method:	Restore with deionized water (or equivalent) - Reconstitution Volume: 100 µL
Concentration:	1.0 mg/ml - lot specific
Conjugation:	Unconjugated
Storage:	Store vial at 4° C prior to restoration. For extended storage aliquot contents and freeze at -20° C or below. Avoid cycles of freezing and thawing. Centrifuge product if not completely clear after standing at room temperature. This product is stable for several weeks at 4° C as an undiluted liquid. Dilute only prior to immediate use.
Stability:	Expiration date is one (1) year from date of receipt.
Database Link:	P11708
Background:	Catalytic activity of Malate Dehydrogenase is (S)-malate + NAD ⁺ = oxaloacetate + NADH.
Synonyms:	sheep anti-Malate Dehydrogenase Antibody, Malate dehydrogenase, cytoplasmic, Cytosolic malate dehydrogenase



[View online »](#)

Note: MALATE DEHYDROGENASE antibody has been tested by western blot and is suitable to be assayed against 1.0 ug of Malate Dehydrogenase [Pig Heart] in a standard ELISA using Peroxidase conjugated Affinity Purified anti-Sheep IgG [H&L] (Goat) code #611-1302 and (ABTS (2,2'-azino-bis-[3-ethylbenthiazoline-6-sulfonic acid]) code # ABTS-100 as a substrate for 30 minutes at room temperature. A working dilution of 1:10,000 to 1:40,000 of the reconstitution concentration is suggested for this product.

Product images:



Western Blot of Sheep anti-Malate Dehydrogenase antibody. Lane 1: Malate Dehydrogenase. Load: 50 ng per lane. Primary antibody: Malate Dehydrogenase antibody at 1:1,000 for overnight at 4°C. Secondary antibody: Peroxidase sheep secondary antibody (p/n 613-4302) at 1:40,000 for 30 min at RT. Block: MB-070 for 30 min at RT. Predicted/Observed size: 36 kDa, 36 kDa for Malate Dehydrogenase.