

## Product datasheet for **TA397067S**

### AVD Rabbit Polyclonal Antibody

#### Product data:

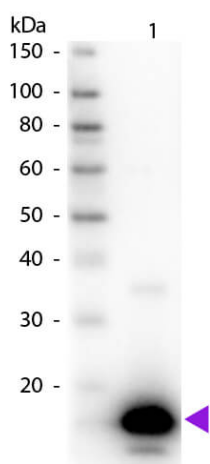
Product Type:	Primary Antibodies
Applications:	ELISA, IHC, WB
Recommended Dilution:	<b>WB:</b> 1:500 - 1:2,500 <b>IHC:</b> 1:250 - 1,000 <b>ELISA:</b> 1:2,000 - 1:10,000
Host:	Rabbit
Clonality:	Polyclonal
Immunogen:	Avidin (Hen Egg White)
Specificity:	Anti-Avidin Antibody Biotin Conjugated is an IgG fraction antibody purified from monospecific antiserum by a multi-step process which includes delipidation, salt fractionation and ion exchange chromatography followed by extensive dialysis against the buffer stated above. Assay by immunoelectrophoresis resulted in a single precipitin arc against anti-biotin, anti-Rabbit Serum, as well as purified and partially purified Avidin [Hen Egg White].
Formulation:	0.02 M Potassium Phosphate, 0.15 M Sodium Chloride, pH 7.2
Concentration:	1.0 mg/mL - lot specific
Conjugation:	Biotin
Storage:	Store vial at -20° C or below prior to opening. This vial contains a relatively low volume of reagent (25 µL). To minimize loss of volume dilute 1:10 by adding 225 µL of the buffer stated above directly to the vial. Recap, mix thoroughly and briefly centrifuge to collect the volume at the bottom of the vial. Use this intermediate dilution when calculating final dilutions as recommended below. Store the vial at -20°C or below after dilution. Avoid cycles of freezing and thawing.
Stability:	Expiration date is one (1) year from date of receipt.
Database Link:	<a href="#">P02701</a>



[View online »](#)

- Background:** Biotin is widely used throughout the biotechnology industry to conjugate proteins for biochemical assays. Biotin's small size typically does not affect the biological activity of protein upon biotinylation. Biotinylated proteins of interest can be enriched from a sample due to highly stable interactions. Biotin conjugated anti-Avidin antibodies are used as an amplifying reagent in immunohistochemistry, microarray assays, ELISAs, blots, and other applications.
- Synonyms:** rabbit anti-Avidin Antibody biotin Conjugation, Biotin conjugated rabbit anti-Avidin antibody, Avidin BAC, Anti-Avidin biotin Antibody, Egg White
- Note:** Anti-Avidin Antibody Biotin Conjugated has been tested by ELISA and western blot and is suitable for immunohistochemistry, immunomicroscopy as well as other antibody based assays using streptavidin or avidin conjugates requiring lot-to-lot consistency.

### Product images:



Western Blot of Rabbit anti-Avidin Biotin Conjugated Antibody. Lane 1: Avidin. Lane 2: None. Load: 100 ng per lane. Primary antibody: Avidin antibody at 1:1000 for 1H at RT. Secondary antibody: Peroxidase streptavidin secondary antibody at 1:40,000 for 30 min at RT. Block: MB-070 for 30 min at RT. Predicted/Observed size: ~17 kDa, ~17 kDa for monomeric Avidin. Other band(s): None.