

Product datasheet for **TA397064S**

RNASE1 Rabbit Polyclonal Antibody

Product data:

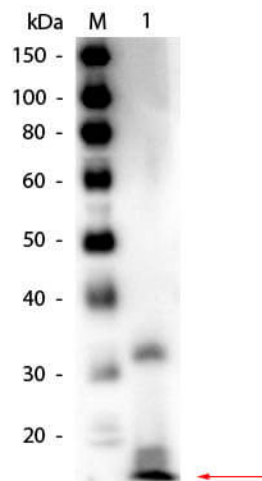
Product Type:	Primary Antibodies
Applications:	ELISA, IP, WB
Recommended Dilution:	WB: 1:500 - 1:2,500 ELISA: 1:2,500 - 1:10,000
Host:	Rabbit
Clonality:	Polyclonal
Immunogen:	Ribonuclease A [Bovine Pancreas]
Specificity:	Anti-Ribonuclease A antibody is an IgG fraction antibody purified from monospecific antiserum by a multi-step process which includes delipidation, salt fractionation and ion exchange chromatography followed by extensive dialysis against the buffer stated above. Assay by immunoelectrophoresis resulted in a single precipitin arc against anti-Biotin, anti-Rabbit Serum as well as purified and partially purified Ribonuclease A [Bovine Pancreas]. Cross reactivity against Ribonuclease A from other sources may occur but have not been specifically determined.
Formulation:	0.02 M Potassium Phosphate, 0.15 M Sodium Chloride, pH 7.2
Concentration:	1.0 mg/mL - lot specific
Conjugation:	Biotin
Storage:	Store vial at -20° C or below prior to opening. This vial contains a relatively low volume of reagent (25 µL). To minimize loss of volume dilute 1:10 by adding 225 µL of the buffer stated above directly to the vial. Recap, mix thoroughly and briefly centrifuge to collect the volume at the bottom of the vial. Use this intermediate dilution when calculating final dilutions as recommended below. Store the vial at -20°C or below after dilution. Avoid cycles of freezing and thawing.
Stability:	Expiration date is one (1) year from date of receipt.
Database Link:	P61823



[View online »](#)

- Background:** Anti-Ribonuclease A recognizes ribonuclease, an endoribonuclease that catalyzes the cleavage of the phosphodiester bond between 5'-ribose of a nucleotide and the phosphate group of a 3'-ribose of a pyrimidine nucleotide. Able to survive acidic and near boiling conditions, RNase A is highly stable. RNase A and its homologs have been demonstrated to have cytotoxic and cytostatic effects.
- Synonyms:** rabbit anti-Ribonuclease A Antibody biotin Conjugation, biotin Conjugated rabbit anti-Ribonuclease A Antibody, Pancreatic ribonuclease antibody, Rib 1 antibody, Rib1 antibody, Ribonuclease a family 1 antibody, Ribonuclease pancreatic antibody, Ribonuclease RNase A family 1 antibody, Ribonuclease RNase A family 1 pancreatic antibody
- Note:** Anti-Ribonuclease A Biotin Conjugated antibody has been tested by ELISA and western blot. This product is assayed against 1.0 ug of Ribonuclease A in a standard capture ELISA using Peroxidase Conjugated Streptavidin #S000-03 and ABTS (2,2'-azino-bis-[3-ethylbenthiazoline-6-sulfonic acid]) code # ABTS-100 as a substrate for 30 minutes at room temperature. A working dilution of 1:3,000 to 1:13,000 of the reconstitution concentration is suggested for this product.

Product images:



Western Blot of Rabbit anti-Ribonuclease A Antibody Biotin Conjugated. Lane 1: Ribonuclease A (Bovine Pancreas). Load: 50 ng per lane. Primary antibody: Rabbit anti-Ribonuclease A Antibody Biotin Conjugated at 1:1,000 overnight at 4°C. Secondary antibody: HRP streptavidin secondary antibody at 1:40,000 for 30 min at RT. Block: MB-070 for 30 min at RT. Predicted/Observed size: 16.5 kDa, 16.5 kDa for Ribonuclease A. Other band(s): Possible dimerization.