

## Product datasheet for **TA397063S**

### KTi3 Rabbit Polyclonal Antibody

#### Product data:

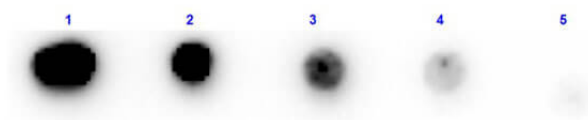
Product Type:	Primary Antibodies
Applications:	WB
Recommended Dilution:	<b>WB:</b> 1:250
Host:	Rabbit
Clonality:	Polyclonal
Immunogen:	Trypsin Inhibitor [Lima Bean]
Specificity:	Anti-Trypsin Inhibitor antibody is an IgG fraction antibody purified from monospecific antiserum by a multi-step process which includes delipidation, salt fractionation and ion exchange chromatography followed by extensive dialysis against the buffer stated above. Assay by immunoelectrophoresis resulted in a single precipitin arc against anti-Biotin, anti-Rabbit Serum as well as purified and partially purified Trypsin Inhibitor [Lima Bean]. Cross reactivity against Trypsin Inhibitor from other sources is unknown.
Formulation:	0.02 M Potassium Phosphate, 0.15 M Sodium Chloride, pH 7.2
Concentration:	1.0 mg/mL - lot specific
Conjugation:	Biotin
Storage:	Store vial at -20° C or below prior to opening. This vial contains a relatively low volume of reagent (25 µL). To minimize loss of volume dilute 1:10 by adding 225 µL of the buffer stated above directly to the vial. Recap, mix thoroughly and briefly centrifuge to collect the volume at the bottom of the vial. Use this intermediate dilution when calculating final dilutions as recommended below. Store the vial at -20°C or below after dilution. Avoid cycles of freezing and thawing.
Stability:	Expiration date is one (1) year from date of receipt.
Database Link:	<a href="#">P01070</a>
Background:	Soy Bean Trypsin Inhibitor is a serine protease inhibitor, an inhibitor of trypsin, therefore preventing the further breakdown of proteins.
Synonyms:	rabbit anti-trypsin inhibitor antibody biotin conjugation, biotin conjugated rabbit anti-trypsin inhibitor antibody, 25 kDa trypsin inhibitor (Protease inhibitor 15 preproprotein) antibody, CRISP8 antibody, KTi antibody, Kti S antibody, KTi3 antibody, KtiS antibody, Kunitz trypsin inhibitor antibody, Kunitz type trypsin inhibitor A antibody



[View online »](#)

**Note:** Anti-Trypsin Inhibitor antibody has been tested by dot blot and assayed against 1.0 ug of Trypsin Inhibitor in a standard capture ELISA using Peroxidase Conjugated Streptavidin #S000-03 and ABTS (2,2'-azino-bis-[3-ethylbenthiazoline-6-sulfonic acid]) code # ABTS-100 as a substrate for 30 minutes at room temperature. A working dilution of 1:6,000 to 1:26,000 of the reconstitution concentration is suggested for this product.

### Product images:



Dot Blot results of Rabbit Anti-Trypsin Inhibitor Antibody Biotin Conjugated. Dots are Trypsin Inhibitor at (1) 100ng, (2) 33.3ng, (3) 11.1ng, (4) 3.70ng, (5) 1.23ng. Blocking: MB-070 for 30 min at RT. Primary Antibody: Rabbit Anti-Trypsin Inhibitor Antibody Biotin at 1µg/mL for 1hr at RT. Secondary Antibody: Streptavidin-HRP (p/n S000-03) at 1:40,000 for 30min at RT. Imaged with BioRad ChemiDoc, Chemi filter.