

Product datasheet for **TA397059S**

PRSS2 Rabbit Polyclonal Antibody

Product data:

Product Type:	Primary Antibodies
Applications:	ELISA, WB
Recommended Dilution:	WB: 1:500 - 1:3,000 ELISA: 1:5,000 - 1:25,000
Host:	Rabbit
Clonality:	Polyclonal
Immunogen:	Trypsinogen [Bovine Pancreas]
Specificity:	Anti-Trypsinogen antibody is an IgG fraction antibody purified from monospecific antiserum by a multi-step process which includes delipidation, salt fractionation and ion exchange chromatography followed by extensive dialysis against the buffer stated above. Assay by immunoelectrophoresis resulted in a single precipitin arc against anti-Biotin, anti-Rabbit Serum as well as purified and partially purified Trypsinogen [Bovine Pancreas]. Cross reactivity against Trypsinogen from other sources may occur but has not been specifically determined.
Formulation:	0.02 M Potassium Phosphate, 0.15 M Sodium Chloride, pH 7.2
Concentration:	1.0 mg/mL - lot specific
Conjugation:	Biotin
Storage:	Store vial at -20° C or below prior to opening. This vial contains a relatively low volume of reagent (25 µL). To minimize loss of volume dilute 1:10 by adding 225 µL of the buffer stated above directly to the vial. Recap, mix thoroughly and briefly centrifuge to collect the volume at the bottom of the vial. Use this intermediate dilution when calculating final dilutions as recommended below. Store the vial at -20°C or below after dilution. Avoid cycles of freezing and thawing.
Stability:	Expiration date is one (1) year from date of receipt.
Database Link:	Q29463



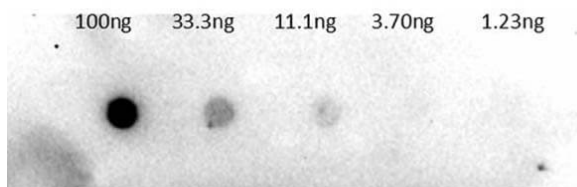
[View online »](#)

Background: Trypsinogen is the precursor form or zymogen of the pancreatic enzyme trypsin. It is found in pancreatic juice, along with amylase, lipase, and chymotrypsinogen. It is activated by enteropeptidase, which is found in the intestinal mucosa, to form trypsin. Once activated, the trypsin can activate more trypsinogen into trypsin. Trypsin cleaves the peptide bond on the carboxyl side of basic amino acids such as arginine and lysine. Anti-Trypsinogen antibody is ideal investigator involved in cytokines and growth factor research.

Synonyms: rabbit anti-Trypsinogen Antibody biotin Conjugation, biotin Conjugated rabbit anti-Trypsinogen Antibody, Brain trypsinogen antibody, Cationic trypsinogen antibody, Mesotrypsinogen antibody, Pancreatic anionic trypsinogen antibody, Protease, serine, 2 antibody, PRSS2 antibody

Note: Anti-Trypsinogen Biotin Conjugated antibody has been tested by dot blot and is suitable to be assayed against 1.0 ug of Trypsinogen in a standard capture ELISA using Peroxidase Conjugated Streptavidin #S000-03 and ABTS (2,2'-azino-bis-[3-ethylbenthiazoline-6-sulfonic acid]) code # ABTS-100 as a substrate for 30 minutes at room temperature. A working dilution of 1:4,000 to 1:20,000 of the reconstitution concentration is suggested for this product.

Product images:



Dot Blot of Rabbit Anti-Trypsinogen Antibody Biotin Conjugation. Lane 1: 100ng. Lane 2: 33.3ng. Lane 3: 11.1ng. Lane 4: 3.7ng. Lane 5: 1.23ng. Primary Antibody: Anti-trypsinogen BAC 1µg/mL. Secondary Antibody: Streptavidin-HRP 1:40,000. Blocking buffer: BlockOut MB-073 for 30 min at RT.