

Product datasheet for **TA397057S**

ampC Rabbit Polyclonal Antibody

Product data:

Product Type:	Primary Antibodies
Applications:	IP, WB
Recommended Dilution:	WB: User Optimized
Reactivity:	Enterobacter cloacae
Host:	Rabbit
Clonality:	Polyclonal
Immunogen:	Penicillinase [Enterobacter cloacae]
Specificity:	Anti-Penicillinase antibody is an IgG fraction antibody purified from monospecific antiserum by a multi-step process which includes delipidation, salt fractionation and ion exchange chromatography followed by extensive dialysis against the buffer stated above. Assay by immunoelectrophoresis resulted in a single precipitin arc against anti-Biotin, anti-Rabbit Serum as well as purified and partially purified Penicillinase [Enterobacter cloacae]. Cross reactivity against Penicillinase from other sources is unknown.
Formulation:	0.02 M Potassium Phosphate, 0.15 M Sodium Chloride, pH 7.2
Concentration:	1.0 mg/mL - lot specific
Conjugation:	Biotin
Storage:	Store vial at -20° C or below prior to opening. This vial contains a relatively low volume of reagent (25 µL). To minimize loss of volume dilute 1:10 by adding 225 µL of the buffer stated above directly to the vial. Recap, mix thoroughly and briefly centrifuge to collect the volume at the bottom of the vial. Use this intermediate dilution when calculating final dilutions as recommended below. Store the vial at -20°C or below after dilution. Avoid cycles of freezing and thawing.
Stability:	Expiration date is one (1) year from date of receipt.
Database Link:	P05364
Background:	Anti-Penicillinase antibody recognizes the protein penicillinase, a beta lactamase specific to penicillins. Penicillinase hydrolyzes the beta-lactam ring of penicillins destroying their antibacterial potency. Thus, penicillinase is often found in antibiotic-resistant bacteria.

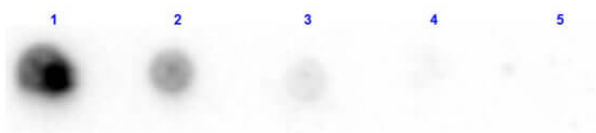


[View online »](#)

Synonyms: rabbit anti-Penicillinase Antibody biotin Conjugation, biotin Conjugated rabbit anti-Penicillinase Antibody, Aer1 antibody, Beta lactamase 1 antibody, Beta lactamase AER 1 antibody, OXA9 antibody, Oxacillinase antibody, PenPC antibody, Cephalosporinase

Note: Anti-Penicillinase Biotin Conjugated antibody has been tested by dot blot and is suitable to be assayed against 1.0 ug of Penicillinase in a standard capture ELISA using Peroxidase Conjugated Streptavidin #S000-03 and ABTS (2,2'-azino-bis-[3-ethylbenthiiazoline-6-sulfonic acid]) code # ABTS-100 as a substrate for 30 minutes at room temperature. A working dilution of 1:4,000 to 1:20,000 of the reconstitution concentration is suggested for this product.

Product images:



Dot Blot results of Rabbit Anti-Penicillinase Antibody Biotin Conjugated. Dots are Penicillinase at (1) 100ng, (2) 33.3ng, (3) 11.1ng, (4) 3.70ng, (5) 1.23ng. Blocking: MB-070 for 30 min at RT. Primary Antibody: Rabbit Anti-Penicillinase Biotin at 1µg/mL for 1hr at RT. Secondary Antibody: Streptavidin-HRP (p/n S000-03) at 1:40,000 for 30min at RT. Imaged with BioRad ChemiDoc, Chemi filter.