

Product datasheet for **TA397053S**

CES3 Rabbit Polyclonal Antibody

Product data:

Product Type:	Primary Antibodies
Applications:	ELISA, WB
Recommended Dilution:	WB: User Optimized ELISA: 1:500 - 1:2,500
Reactivity:	Porcine
Host:	Rabbit
Clonality:	Polyclonal
Immunogen:	Esterase [Porcine Liver]
Specificity:	Anti-Esterase is an IgG fraction antibody purified from monospecific antiserum by a multi-step process which includes delipidation, salt fractionation and ion exchange chromatography followed by extensive dialysis against the buffer stated above. Assay by immunoelectrophoresis resulted in a single precipitin arc against anti-Biotin, anti-Rabbit Serum as well as purified and partially purified Esterase [Porcine Liver]. Cross reactivities against Esterase from other sources may occur but have not been specifically determined.
Formulation:	0.02 M Potassium Phosphate, 0.15 M Sodium Chloride, pH 7.2
Concentration:	1.0 mg/mL - lot specific
Conjugation:	Biotin
Storage:	Store vial at -20° C or below prior to opening. This vial contains a relatively low volume of reagent (25 µL). To minimize loss of volume dilute 1:10 by adding 225 µL of the buffer stated above directly to the vial. Recap, mix thoroughly and briefly centrifuge to collect the volume at the bottom of the vial. Use this intermediate dilution when calculating final dilutions as recommended below. Store the vial at -20°C or below after dilution. Avoid cycles of freezing and thawing.
Stability:	Expiration date is one (1) year from date of receipt.
Database Link:	Q29550



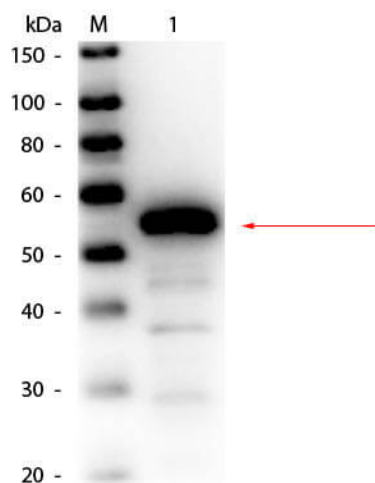
[View online »](#)

Background: Anti-Esterase antibody is involved in the detoxification of xenobiotics, as well as in the activation of ester and amide prodrugs. The antibody is inactive on long-chain triacylglycerols and diacylglycerol, but active towards triacylglycerides composed with short-chain fatty acids from C2 to C6 and monoacylglycerols containing fatty acids from C2 to C12. Esterase hydrolyzes aromate and alkyl esters and vitamin A acetate, the rate of hydrolysis varies due to the hydrolyzing substances. Anti-Esterase antibody member of the type-B carboxylesterase/lipase family.

Synonyms: rabbit anti-Esterase Antibody biotin Conjugation, biotin conjugated rabbit anti-Esterase Antibody, Liver carboxylesterase, Proline-beta-naphthylamidase, Retinyl ester hydrolase

Note: Anti-Esterase Biotin Conjugated Antibody has been tested by ELISA and western blot. This product is assayed against 1.0 ug of Esterase in a standard capture ELISA using Peroxidase Conjugated Streptavidin #S000-03 and ABTS (2,2'-azino-bis-[3-ethylbenthiazoline-6-sulfonic acid]) code # ABTS-100 as a substrate for 30 minutes at room temperature. A working dilution of 1:4,000 to 1:20,000 of the reconstitution concentration is suggested for this product.

Product images:



Western Blot of Rabbit anti-Esterase Antibody Biotin Conjugated. Lane 1: Esterase (Porcine Liver). Load: 50 ng per lane. Primary antibody: Rabbit anti-Esterase Antibody Biotin Conjugated at 1:1,000 overnight at 4°C. Secondary antibody: HRP Streptavidin secondary antibody at 1:40,000 for 30 min at RT. Block: MB-070 for 30 min at RT. Predicted/Observed size: 62 kDa, 55 kDa for Esterase.