

## Product datasheet for **TA397052**

### CES3 Rabbit Polyclonal Antibody

#### Product data:

Product Type:	Primary Antibodies
Applications:	ELISA, WB
Recommended Dilution:	<b>WB:</b> User Optimized <b>ELISA:</b> 1:2,000 - 1:5,000
Reactivity:	Porcine
Host:	Rabbit
Clonality:	Polyclonal
Immunogen:	Esterase [Porcine Liver]
Specificity:	Anti-Esterase is an IgG fraction antibody purified from monospecific antiserum by a multi-step process which includes delipidation, salt fractionation and ion exchange chromatography followed by extensive dialysis against the buffer stated above. Assay by immunoelectrophoresis resulted in a single precipitin arc against anti-Biotin, anti-Rabbit Serum as well as purified and partially purified Esterase [Porcine Liver]. Cross reactivities against Esterase from other sources may occur but have not been specifically determined.
Formulation:	0.02 M Potassium Phosphate, 0.15 M Sodium Chloride, pH 7.2
Reconstitution Method:	Restore with deionized water (or equivalent) - Reconstitution Volume: 100 µL
Concentration:	1.0 mg/mL - lot specific
Conjugation:	Biotin
Storage:	Store vial at 4° C prior to restoration. For extended storage aliquot contents and freeze at -20° C or below. Avoid cycles of freezing and thawing. Centrifuge product if not completely clear after standing at room temperature. This product is stable for several weeks at 4° C as an undiluted liquid. Dilute only prior to immediate use.
Stability:	Expiration date is one (1) year from date of receipt.
Database Link:	<a href="#">Q29550</a>



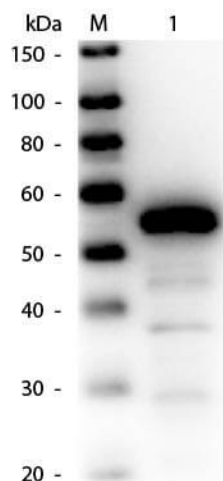
[View online »](#)

**Background:** Anti-Esterase antibody is involved in the detoxification of xenobiotics, as well as in the activation of ester and amide prodrugs. The antibody is inactive on long-chain triacylglycerols and diacylglycerol, but active towards triacylglycerides composed with short-chain fatty acids from C2 to C6 and monoacylglycerols containing fatty acids from C2 to C12. Esterase hydrolyzes aromate and alkyl esters and vitamin A acetate, the rate of hydrolysis varies due to the hydrolyzing substances. Anti-Esterase antibody member of the type-B carboxylesterase/lipase family.

**Synonyms:** rabbit anti-Esterase Antibody biotin Conjugation, biotin conjugated rabbit anti-Esterase Antibody, Liver carboxylesterase, Proline-beta-naphthylamidase, Retinyl ester hydrolase

**Note:** Anti-Esterase Biotin Conjugated Antibody has been tested by ELISA and western blot. This product is assayed against 1.0 ug of Esterase in a standard capture ELISA using Peroxidase Conjugated Streptavidin #S000-03 and ABTS (2,2'-azino-bis-[3-ethylbenthiazoline-6-sulfonic acid]) code # ABTS-100 as a substrate for 30 minutes at room temperature. A working dilution of 1:4,000 to 1:20,000 of the reconstitution concentration is suggested for this product.

### Product images:



Western Blot of Rabbit anti-Esterase Antibody Biotin Conjugated. Lane 1: Esterase (Porcine Liver). Load: 50 ng per lane. Primary antibody: Rabbit anti-Esterase Antibody Biotin Conjugated at 1:1,000 overnight at 4°C. Secondary antibody: HRP Streptavidin secondary antibody at 1:40,000 for 30 min at RT. Block: MB-070 for 30 min at RT. Predicted/Observed size: 62 kDa, 55 kDa for Esterase.