

## Product datasheet for **TA397038S**

### CAT Rabbit Polyclonal Antibody

#### Product data:

Product Type:	Primary Antibodies
Applications:	ELISA, WB
Recommended Dilution:	<b>WB:</b> 1:500- 1:2,500 <b>ELISA:</b> 1:10,000 - 1:40,000
Host:	Rabbit
Clonality:	Polyclonal
Immunogen:	Catalase [Bovine Liver]
Specificity:	Anti-Catalase is an IgG fraction antibody purified from monospecific antiserum by a multi-step process which includes delipidation, salt fractionation and ion exchange chromatography followed by extensive dialysis against the buffer stated above. Assay by immunoelectrophoresis resulted in a single precipitin arc against anti-Biotin, anti-Rabbit Serum as well as purified and partially purified Catalase [Bovine Liver]. Cross reactivity against Catalase from other sources may occur but has not been specifically determined.
Formulation:	0.02 M Potassium Phosphate, 0.15 M Sodium Chloride, pH 7.2
Concentration:	1.0 mg/mL - lot specific
Conjugation:	Biotin
Storage:	Store vial at -20° C or below prior to opening. This vial contains a relatively low volume of reagent (25 µL). To minimize loss of volume dilute 1:10 by adding 225 µL of the buffer stated above directly to the vial. Recap, mix thoroughly and briefly centrifuge to collect the volume at the bottom of the vial. Use this intermediate dilution when calculating final dilutions as recommended below. Store the vial at -20°C or below after dilution. Avoid cycles of freezing and thawing.
Stability:	Expiration date is one (1) year from date of receipt.
Database Link:	<a href="#">P00432</a>



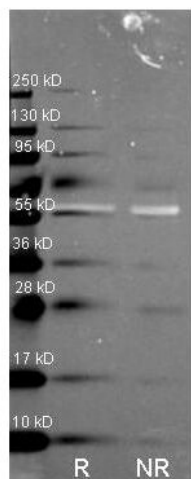
[View online »](#)

**Background:** Anti-Catalase antibody serves to protect cells of aerobically respiring organisms from the negative effects of hydrogen peroxide. Additionally Catalase promotes cell growth including T-cells, B-cells, myeloid leukemia, melanoma, mastocytoma, and normal and transformed fibroblast cells. Belonging to the catalase family, Anti-Catalase antibody is ideal for researchers invested in Metabolism, Cancer, Cardiovascular, Signal Transduction, and Tags & Cell Marker research.

**Synonyms:** rabbit anti-Catalase Antibody biotin Conjugation, biotin Conjugated rabbit anti-Catalase Antibody, Cas 1 antibody, CAT antibody, Cs1 antibody, MGC138422 antibody, MGC138424 antibody

**Note:** Anti-Catalase Biotin Conjugated Antibody has been tested by ELISA and western blot. This antibody is assayed against 1.0 ug of Catalase in a standard capture ELISA using Peroxidase Conjugated Streptavidin #S000-03 and ABTS (2,2'-azino-bis-[3-ethylbenthiiazoline-6-sulfonic acid]) code # ABTS-100 as a substrate for 30 minutes at room temperature. A working dilution of 1:4,000 to 1:20,000 of the reconstitution concentration is suggested for this product.

### Product images:



Western Blot of Rabbit anti-Catalase antibody. Lane R: Reduced samples of purified Catalase. Lane NR: Non-reduced samples of purified Catalase. Load: ~1ug of protein per lane. Primary antibody: Catalase antibody at 1:1000 for overnight at 4°C. Secondary antibody: Dylight488™ rabbit secondary antibody at 1:10,000 for 1.5 hrs at RT. Block: MB-070 overnight at 4°C. Predicted/Observed size: 59.9 kDa, 55 kDa for catalase. Other band(s): none.