

## Product datasheet for **TA397037**

### CAT Rabbit Polyclonal Antibody

#### Product data:

Product Type:	Primary Antibodies
Applications:	ELISA, WB
Recommended Dilution:	<b>WB:</b> 1:500- 1:2,500 <b>ELISA:</b> 1:10,000 - 1:40,000
Host:	Rabbit
Clonality:	Polyclonal
Immunogen:	Catalase [Bovine Liver]
Specificity:	Anti-Catalase is an IgG fraction antibody purified from monospecific antiserum by a multi-step process which includes delipidation, salt fractionation and ion exchange chromatography followed by extensive dialysis against the buffer stated above. Assay by immunoelectrophoresis resulted in a single precipitin arc against anti-Biotin, anti-Rabbit Serum as well as purified and partially purified Catalase [Bovine Liver]. Cross reactivity against Catalase from other sources may occur but has not been specifically determined.
Formulation:	0.02 M Potassium Phosphate, 0.15 M Sodium Chloride, pH 7.2
Reconstitution Method:	Restore with deionized water (or equivalent) - Reconstitution Volume: 100 µL
Concentration:	1.0 mg/mL - lot specific
Conjugation:	Biotin
Storage:	Store vial at 4° C prior to restoration. For extended storage aliquot contents and freeze at -20° C or below. Avoid cycles of freezing and thawing. Centrifuge product if not completely clear after standing at room temperature. This product is stable for several weeks at 4° C as an undiluted liquid. Dilute only prior to immediate use.
Stability:	Expiration date is one (1) year from date of receipt.
Database Link:	<a href="#">P00432</a>
Background:	Anti-Catalase antibody serves to protect cells of aerobically respiring organisms from the negative effects of hydrogen peroxide. Additionally Catalase promotes cell growth including T-cells, B-cells, myeloid leukemia, melanoma, mastocytoma, and normal and transformed fibroblast cells. Belonging to the catalase family, Anti-Catalase antibody is ideal for researchers invested in Metabolism, Cancer , Cardiovascular , Signal Transduction, and Tags & Cell Marker research.

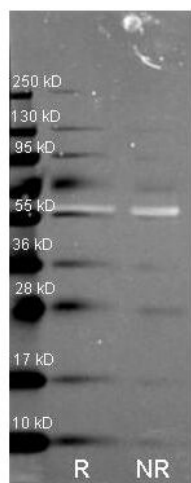


[View online »](#)

**Synonyms:** rabbit anti-Catalase Antibody biotin Conjugation, biotin Conjugated rabbit anti-Catalase Antibody, Cas 1 antibody, CAT antibody, Cs1 antibody, MGC138422 antibody, MGC138424 antibody

**Note:** Anti-Catalase Biotin Conjugated Antibody has been tested by ELISA and western blot. This antibody is assayed against 1.0 ug of Catalase in a standard capture ELISA using Peroxidase Conjugated Streptavidin #S000-03 and ABTS (2,2'-azino-bis-[3-ethylbenthiiazoline-6-sulfonic acid]) code # ABTS-100 as a substrate for 30 minutes at room temperature. A working dilution of 1:4,000 to 1:20,000 of the reconstitution concentration is suggested for this product.

### Product images:



Western Blot of Rabbit anti-Catalase antibody. Lane R: Reduced samples of purified Catalase. Lane NR: Non-reduced samples of purified Catalase. Load: ~1ug of protein per lane. Primary antibody: Catalase antibody at 1:1000 for overnight at 4°C. Secondary antibody: Dylight488™ rabbit secondary antibody at 1:10,000 for 1.5 hrs at RT. Block: MB-070 overnight at 4°C. Predicted/Observed size: 59.9 kDa, 55 kDa for catalase. Other band(s): none.