

Product datasheet for **TA397032S**

Alpha-amylase Rabbit Polyclonal Antibody

Product data:

Product Type:	Primary Antibodies
Applications:	ELISA, IP, WB
Recommended Dilution:	WB: 1:500 - 1:5,000 ELISA: 1:5,000 - 1:20,000
Reactivity:	Bacillus amyloliquefacies
Host:	Rabbit
Clonality:	Polyclonal
Immunogen:	a-Amylase [Bacillus amyloliquefaciens]
Specificity:	Anti-Alpha Amylase is an IgG fraction antibody purified from monospecific antiserum by a multi-step process which includes delipidation, salt fractionation and ion exchange chromatography followed by extensive dialysis against the buffer stated above. Assay by immunoelectrophoresis resulted in a single precipitin arc against anti-Biotin, anti-Rabbit Serum as well as purified and partially purified a-Amylase [B.amyloliquefaciens]. Cross reactivity against a-Amylase from other sources may occur but has not been specifically determined.
Formulation:	0.02 M Potassium Phosphate, 0.15 M Sodium Chloride, pH 7.2
Concentration:	1.0 mg/mL - lot specific
Conjugation:	Biotin
Storage:	Store vial at -20° C or below prior to opening. This vial contains a relatively low volume of reagent (25 µL). To minimize loss of volume dilute 1:10 by adding 225 µL of the buffer stated above directly to the vial. Recap, mix thoroughly and briefly centrifuge to collect the volume at the bottom of the vial. Use this intermediate dilution when calculating final dilutions as recommended below. Store the vial at -20°C or below after dilution. Avoid cycles of freezing and thawing.
Stability:	Expiration date is one (1) year from date of receipt.
Database Link:	<u>P00692</u>



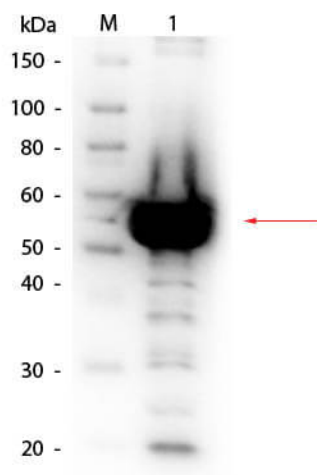
[View online »](#)

Background: Alpha Amylase is a member of the glycosyl hydrolase 13 family, involved primarily in the hydrolysis of biopolymer residues of 1, 4-alpha-D-glucosidic linkages in polysaccharides. It performs its catalytic function in metabolism of carbohydrates. Anti-Alpha Amylase antibody is ideal for investigators involved in Metabolism, Signal Transduction, and Cancer research.

Synonyms: rabbit anti-Alpha Amylase Antibody biotin Conjugation, biotin conjugated rabbit anti-Alpha Amylase Antibody, Alpha-amylase, 1,4-alpha-D-glucan glucanohydrolase

Note: Anti-Alpha Amylase Biotin Conjugated Antibody has been tested by western blot and is suitable to be assayed against 1.0 ug of a-Amylase in a standard capture ELISA using Peroxidase Conjugated Streptavidin #S000-03 and ABTS (2,2'-azino-bis-[3-ethylbenthiazoline-6-sulfonic acid]) code # ABTS-100 as a substrate for 30 minutes at room temperature. A working dilution of 1:4,000 to 1:20,000 of the reconstitution concentration is suggested for this product.

Product images:



Western Blot of Rabbit anti-Alpha Amylase Antibody Biotin Conjugated. Lane 1: Alpha Amylase solution. Load: 1/200 dilution of Alpha Amylase solution. Primary antibody: Alpha Amylase antibody at 1:1,000 overnight at 4°C. Secondary antibody: HRP Streptavidin secondary antibody at 1:40,000 for 30 min at RT. Block: MB-070 for 30 min at RT. Predicted/Observed size: 55 kDa, 55 kDa for Alpha Amylase. Other band(s): proteins within Alpha Amylase solution.