

Product datasheet for **TA397029S**

ADH1 Rabbit Polyclonal Antibody

Product data:

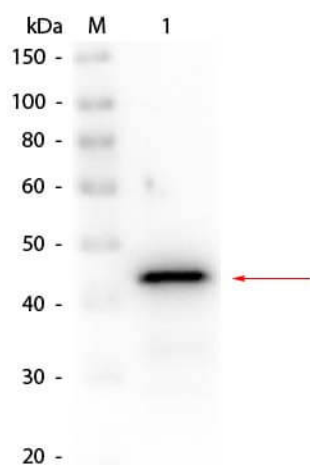
Product Type:	Primary Antibodies
Applications:	ELISA, IP, WB
Recommended Dilution:	WB: 1:500 - 1:5,000 ELISA: 1:2,000 - 1:15,000
Host:	Rabbit
Clonality:	Polyclonal
Immunogen:	Alcohol Dehydrogenase [Yeast]
Specificity:	Anti-Alcohol Dehydrogenase is an IgG fraction antibody purified from monospecific antiserum by a multi-step process which includes delipidation, salt fractionation and ion exchange chromatography followed by extensive dialysis against the buffer stated above. Assay by immunoelectrophoresis resulted in a single precipitin arc against anti-Biotin, anti-Rabbit Serum as well as purified and partially purified Alcohol Dehydrogenase [Yeast]. Cross reactivity against Alcohol Dehydrogenase from other sources may occur but have not been specifically determined.
Formulation:	0.02 M Potassium Phosphate, 0.15 M Sodium Chloride, pH 7.2
Concentration:	1.0 mg/mL - lot specific
Conjugation:	Biotin
Storage:	Store vial at -20° C or below prior to opening. This vial contains a relatively low volume of reagent (25 µL). To minimize loss of volume dilute 1:10 by adding 225 µL of the buffer stated above directly to the vial. Recap, mix thoroughly and briefly centrifuge to collect the volume at the bottom of the vial. Use this intermediate dilution when calculating final dilutions as recommended below. Store the vial at -20°C or below after dilution. Avoid cycles of freezing and thawing.
Stability:	Expiration date is one (1) year from date of receipt.
Database Link:	P00330



[View online »](#)

- Background:** Alcohol Dehydrogenase is part of the zinc-containing alcohol dehydrogenase family. Anti-Alcohol Dehydrogenase catalyzes primary branched alcohols to convert to their aldehyde forms and shows some reactivity with secondary alcohols. Localized in the cytoplasm, the Anti-Alcohol Dehydrogenase antibody is ideal for researchers interested in Metabolism, Signal Transduction, and Cancer research.
- Synonyms:** rabbit anti-Alcohol Dehydrogenase Antibody biotin Conjugation, biotin conjugated rabbit anti-Alcohol Dehydrogenase Antibody, Alcohol dehydrogenase 1, Alcohol dehydrogenase I, YADH-1, ADH1, ADC1, ADH, ADC
- Note:** Anti-Alcohol Dehydrogenase Biotin Conjugated Antibody has been tested in ELISA and Western blot. This product is assayed against 1.0 ug of Alcohol Dehydrogenase in a standard capture ELISA using Peroxidase Conjugated Streptavidin #S000-03 and ABTS (2,2'-azino-bis-[3-ethylbenthiiazoline-6-sulfonic acid]) code # ABTS-100 as a substrate for 30 minutes at room temperature. A working dilution of 1:4,000 to 1:20,000 of the reconstitution concentration is suggested for this product.

Product images:



Western Blot of Rabbit anti-Alcohol Dehydrogenase (Yeast) Antibody Biotin Conjugated. Lane 1: Alcohol Dehydrogenase (yeast). Load: 50 ng per lane. Primary antibody: Rabbit anti-Alcohol Dehydrogenase (Yeast) Antibody Biotin Conjugated at 1:1,000 overnight at 4°C. Secondary antibody: Peroxidase Streptavidin Antibody (p/n S000-03) at 1:40,000 for 30 min at RT. Block: MB-070 for 30 min at RT. Predicted/Observed size: 37 kDa, 45 kDa for Alcohol Dehydrogenase (yeast).