

## Product datasheet for **TA397019S**

### phoA Rabbit Polyclonal Antibody

#### Product data:

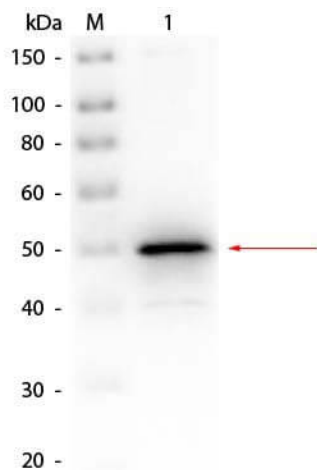
Product Type:	Primary Antibodies
Applications:	ELISA, WB
Recommended Dilution:	<b>WB:</b> 1:500 - 1:2,000 <b>ELISA:</b> 1:4,000 - 1:20,000
Reactivity:	Escherichia coli
Host:	Rabbit
Clonality:	Polyclonal
Immunogen:	Alkaline Phosphatase [E.coli]
Specificity:	Anti-Alkaline Phosphatase is an IgG fraction antibody purified from monospecific antiserum by a multi-step process which includes delipidation, salt fractionation and ion exchange chromatography followed by extensive dialysis against the buffer stated above. Assay by immunoelectrophoresis resulted in a single precipitin arc against anti-Biotin, anti-Rabbit Serum as well as purified and partially purified Alkaline Phosphatase [E.coli]. Cross reactivities against Alkaline Phosphatase from other sources may occur but have not been specifically determined.
Formulation:	0.02 M Potassium Phosphate, 0.15 M Sodium Chloride, pH 7.2
Concentration:	1.0 mg/mL - lot specific
Conjugation:	Biotin
Storage:	Store vial at -20° C or below prior to opening. This vial contains a relatively low volume of reagent (25 µL). To minimize loss of volume dilute 1:10 by adding 225 µL of the buffer stated above directly to the vial. Recap, mix thoroughly and briefly centrifuge to collect the volume at the bottom of the vial. Use this intermediate dilution when calculating final dilutions as recommended below. Store the vial at -20°C or below after dilution. Avoid cycles of freezing and thawing.
Stability:	Expiration date is one (1) year from date of receipt.
Database Link:	<a href="#">P00634</a>



[View online »](#)

- Background:** At a high pH, Anti-Alkaline Phosphatase antibodies strip phosphate groups from DNA, RNA, and proteins. ALP is most abundant in placental and intestinal tissue specific such as the liver, placenta, and bone. Located in the cell membrane, Anti-Alkaline Phosphatase antibodies are ideal for researchers involved in Cancer, Enzyme, Tags and Cell Marker, and Cell Cycle research.
- Synonyms:** rabbit anti-Alkaline Phosphatase Antibody biotin Conjugation, biotin conjugated rabbit anti-Alkaline Phosphatase Antibody, Akp2 antibody, ALP antibody, Nagao isozyme antibody, Placental alkaline phosphatase antibody, Placental like alkaline phosphatase antibody, PLAP 1 antibody, PLAP like antibody, Regan isozyme antibody, Kasahara isozyme antibody
- Note:** Anti-Alkaline Phosphatase Biotin Conjugated Antibody has been tested by ELISA and western blot. This product is assayed against 1.0 ug of Alkaline Phosphatase in a standard capture ELISA using Peroxidase Conjugated Streptavidin #S000-03 and ABTS (2,2'-azino-bis-[3-ethylbenzothiazoline-6-sulfonic acid]) code # ABTS-100 as a substrate for 30 minutes at room temperature. A working dilution of 1:4,000 to 1:20,000 of the reconstitution concentration is suggested for this product.

### Product images:



Western Blot of Rabbit anti-Alkaline Phosphatase (E. Coli) Antibody Biotin Conjugated. Lane 1: Alkaline Phosphatase (E. Coli). Load: 50 ng per lane. Primary antibody: Rabbit anti-Alkaline Phosphatase (E. Coli) Antibody Biotin Conjugated at 1:1,000 overnight at 4°C. Secondary antibody: Peroxidase Streptavidin (S000-03) at 1:40,000 for 30 min at RT. Block: MB-070 for 30 min at RT. Predicted/Observed size: 50 kDa, 50 kDa for Alkaline Phosphatase (E. Coli).