

## Product datasheet for **TA397015S**

### SOD1 Rabbit Polyclonal Antibody

#### Product data:

Product Type:	Primary Antibodies
Applications:	ELISA, WB
Recommended Dilution:	<b>WB:</b> 1:500- 1:2,000 <b>ELISA:</b> 1:5,000 - 1:20,000
Host:	Rabbit
Clonality:	Polyclonal
Immunogen:	Superoxide Dismutase [Bovine erythrocytes]
Specificity:	Superoxide Dismutase is an IgG fraction antibody purified from monospecific antiserum by a multi-step process which includes delipidation, salt fractionation and ion exchange chromatography followed by extensive dialysis against the buffer stated above. Assay by immunoelectrophoresis resulted in a single precipitin arc against anti-Peroxidase, anti-Rabbit Serum as well as purified and partially purified Superoxide Dismutase [Bovine erythrocytes]. Cross reactivity against Superoxide Dismutase from other tissues and species may occur but have not been specifically determined.
Formulation:	0.02 M Potassium Phosphate, 0.15 M Sodium Chloride, pH 7.2
Concentration:	1.0 mg/mL - lot specific
Conjugation:	HRP
Storage:	Store vial at -20° C or below prior to opening. This vial contains a relatively low volume of reagent (25 µL). To minimize loss of volume dilute 1:10 by adding 225 µL of the buffer stated above directly to the vial. Recap, mix thoroughly and briefly centrifuge to collect the volume at the bottom of the vial. Use this intermediate dilution when calculating final dilutions as recommended below. Store the vial at -20°C or below after dilution. Avoid cycles of freezing and thawing.
Stability:	Expiration date is one (1) year from date of receipt.
Database Link:	<u><a href="#">P00442</a></u>
Background:	Superoxide Dismutase destroys radicals which are normally produced within the cells and which are toxic to biological systems. They are an important antioxidant defense in nearly all cells exposed to oxygen. Mutations in the Superoxide Dismutase enzyme can cause ALS, A4V, G93A, Down Syndrome, ARDS, and COPD.



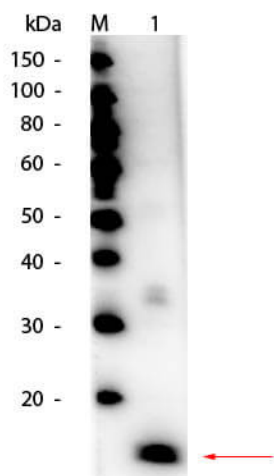
[View online »](#)

**Synonyms:**

rabbit anti-Superoxide Dismutase 1 Antibody HRP conjugation, peroxidase conjugated rabbit anti-SOD1 antibody, peroxidase conjugated rabbit anti-Superoxide Dismutase 1 Antibody, rabbit anti-SOD1 antibody HRP conjugation, ALS 1 antibody, ALS antibody, ALS1 antibody, Amyotrophic lateral sclerosis 1 adult antibody, Amyotrophic lateral sclerosis 1 antibody, Cu/Zn SOD antibody, Cu/Zn superoxide dismutase antibody, Homodimer antibody, SOD 1

**Note:**

Anti-Superoxide Dismutase Peroxidase Conjugated Antibody has been tested by Western blot and is suitable to be assayed against 1.0 ug of Superoxide Dismutase [Bovine erythrocytes] in a standard capture ELISA using ABTS (2,2'-azino-bis-[3-ethylbenthiazoline-6-sulfonic acid]) code # ABTS-100 as a substrate for 30 minutes at room temperature. A working dilution of 1:1,000 to 1:2,000 of the reconstitution concentration is suggested for this product.

**Product images:**


Western Blot of HRP Conjugated Superoxide Dismutase Antibody. Lane 1: Superoxide Dismutase Load: 50 ng per lane. Primary antibody: HRP Conjugated Superoxide Dismutase Antibody at 1:1,000 overnight at 4°C. Secondary antibody: none Detected directly using FEMTOMAX Substrate (p/n FEMTOMAX-110A and FEMTOMAX-110B). Block: MB-070 for 30 min at RT. Predicted/Observed size: 15.6 kDa, 15.6 kDa.