

## Product datasheet for **TA397014S**

### **RNASE1 Rabbit Polyclonal Antibody**

#### **Product data:**

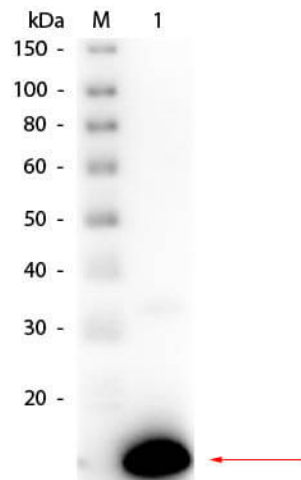
<b>Product Type:</b>	Primary Antibodies
<b>Applications:</b>	ELISA, IP, WB
<b>Recommended Dilution:</b>	<b>WB:</b> 1:500 - 1:2,500 <b>ELISA:</b> 1:10,000 - 1:40,000
<b>Host:</b>	Rabbit
<b>Clonality:</b>	Polyclonal
<b>Immunogen:</b>	Ribonuclease A [Bovine Pancreas]
<b>Specificity:</b>	Ribonuclease A is an IgG fraction antibody purified from monospecific antiserum by a multi-step process which includes delipidation, salt fractionation and ion exchange chromatography followed by extensive dialysis against the buffer stated above. Assay by immunoelectrophoresis resulted in a single precipitin arc against anti-Peroxidase, anti-Rabbit Serum as well as purified and partially purified Ribonuclease A [Bovine Pancreas]. Cross reactivity against Ribonuclease A from other tissues and species may occur but have not been specifically determined.
<b>Formulation:</b>	0.02 M Potassium Phosphate, 0.15 M Sodium Chloride, pH 7.2
<b>Concentration:</b>	1.0 mg/mL - lot specific
<b>Conjugation:</b>	HRP
<b>Storage:</b>	Store vial at -20° C or below prior to opening. This vial contains a relatively low volume of reagent (25 µL). To minimize loss of volume dilute 1:10 by adding 225 µL of the buffer stated above directly to the vial. Recap, mix thoroughly and briefly centrifuge to collect the volume at the bottom of the vial. Use this intermediate dilution when calculating final dilutions as recommended below. Store the vial at -20°C or below after dilution. Avoid cycles of freezing and thawing.
<b>Stability:</b>	Expiration date is one (1) year from date of receipt.
<b>Database Link:</b>	<a href="#">P61823</a>



[View online »](#)

- Background:** Ribonuclease A is a pancreatic ribonuclease that cleaves single-stranded RNA. Bovine pancreatic RNase A is one of the classic model systems of protein science. RNase A cleaves specifically after pyrimidine nucleotides. It can be inhibited by ribonuclease inhibitor protein, by heavy metal ions, and by uridine-vanadate complexes. RNase A, and to a greater extent its oligomers and some homologs, have cytotoxic and cytostatic effects, particularly on cancer cells.
- Synonyms:** rabbit anti-Ribonuclease A Antibody Peroxidase Conjugation, HRP Conjugated rabbit anti-Ribonuclease A Antibody, Pancreatic ribonuclease antibody, Rib 1 antibody, Rib1 antibody, Ribonuclease a family 1 antibody, Ribonuclease pancreatic antibody, Ribonuclease RNase A family 1 antibody, Ribonuclease RNase A family 1 pancreatic antibody
- Note:** Anti-Ribonuclease A Peroxidase Conjugated Antibody has been tested by ELISA and western blot. This product is assayed against 1.0 ug of Ribonuclease A [Bovine Pancreas] in a standard capture ELISA using ABTS (2,2'-azino-bis-[3-ethylbenthiazoline-6-sulfonic acid]) code # ABTS-100 as a substrate for 30 minutes at room temperature. A working dilution of 1:1,000 to 1:5,000 of the reconstitution concentration is suggested for this product.

### Product images:



Western Blot of Rabbit anti-Ribonuclease A Antibody Peroxidase Conjugated. Lane 1: Ribonuclease A (Bovine Pancreas). Load: 50 ng per lane. Primary antibody: Rabbit anti-Ribonuclease A Antibody Peroxidase Conjugated at 1:1,000 overnight at 4°C. Secondary antibody: n/a. Block: MB-070 for 30 min at RT. Predicted/Observed size: 16.5 kDa, 16.5 kDa for Ribonuclease A.