

Product datasheet for **TA397010S**

PRSS2 Rabbit Polyclonal Antibody

Product data:

Product Type:	Primary Antibodies
Applications:	ELISA, WB
Recommended Dilution:	WB: 1:1,000 - 1:5,000 ELISA: 1:10,000 - 1:40,000
Host:	Rabbit
Clonality:	Polyclonal
Immunogen:	Trypsinogen [Bovine Pancreas]
Specificity:	Anti-TRYPSINOGEN (RABBIT) Antibody is an IgG fraction antibody purified from monospecific antiserum by a multi-step process which includes delipidation, salt fractionation and ion exchange chromatography followed by extensive dialysis against the buffer stated above. Assay by immunoelectrophoresis resulted in a single precipitin arc against anti-Peroxidase, anti-Rabbit Serum as well as purified and partially purified Trypsinogen [Bovine Pancreas]. Cross reactivity against Trypsinogen from other tissues and species may occur but have not been specifically determined.
Formulation:	0.02 M Potassium Phosphate, 0.15 M Sodium Chloride, pH 7.2
Concentration:	1.0 mg/mL - lot specific
Conjugation:	HRP
Storage:	Store vial at -20° C or below prior to opening. This vial contains a relatively low volume of reagent (25 µL). To minimize loss of volume dilute 1:10 by adding 225 µL of the buffer stated above directly to the vial. Recap, mix thoroughly and briefly centrifuge to collect the volume at the bottom of the vial. Use this intermediate dilution when calculating final dilutions as recommended below. Store the vial at -20°C or below after dilution. Avoid cycles of freezing and thawing.
Stability:	Expiration date is one (1) year from date of receipt.
Database Link:	Q29463



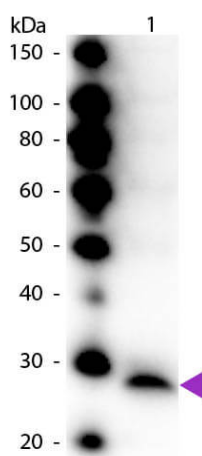
[View online »](#)

Background: Trypsinogen is the precursor form or zymogen of the pancreatic enzyme trypsin. It is found in pancreatic juice, along with amylase, lipase, and chymotrypsinogen. It is activated by enteropeptidase, which is found in the intestinal mucosa, to form trypsin. Once activated, the trypsin can activate more trypsinogen into trypsin. Trypsin cleaves the peptide bond on the carboxyl side of basic amino acids such as arginine and lysine. Anti-Trypsinogen antibody is ideal investigator involved in cytokines and growth factor research.

Synonyms: rabbit anti-Trypsinogen Antibody HRP Conjugation, Peroxidase Conjugated rabbit anti-Trypsinogen Antibody, Brain trypsinogen antibody, Cationic trypsinogen antibody, Mesotrypsinogen antibody, Pancreatic anionic trypsinogen antibody, Protease, serine, 2 antibody, PRSS2 antibody

Note: Anti-TRYPsinOGEN Peroxidase Conjugated Antibody has been tested by ELISA and Western blot. This product is assayed against 1.0 ug of Trypsinogen [Bovine Pancreas] in a standard capture ELISA using ABTS (2,2'-azino-bis-[3-ethylbenthiazoline-6-sulfonic acid]) code # ABTS-100 as a substrate for 30 minutes at room temperature. A working dilution of 1:1,000 to 1:3,000 of the reconstitution concentration is suggested for this product. Specific conditions should be optimized by user.

Product images:



Western Blot of Peroxidase conjugated Rabbit Anti-Trypsinogen primary antibody. Lane 1: Trypsinogen. Lane 2: None. Load: 50 ng per lane. Primary antibody: None. Secondary antibody: Peroxidase rabbit secondary antibody at 1:1,000 for 60 min at RT. Block: MB-070 for 30 min at RT. Predicted/Observed size: 24 kDa, 24 kDa for Trypsinogen. Other band(s): None.